

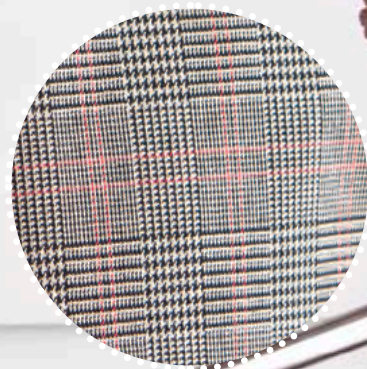


# men's fall zipper jacket

by JIL CAPPUCCIO

Project photo on page 57; instructions  
on page 112 of *Stitch* Fall 2010.

This loose-fitting, unlined zipper jacket is sure to become your guy's favorite for keeping warm during cool autumn days. He'll love the roomy pockets, and the drop-shoulder construction makes the jacket easy to wear over sweaters.



# pattern guide

## GETTING STARTED

Basic techniques & terms  
you'll need to know for the  
pattern you have downloaded.

### ASSEMBLING FULL-SIZE PATTERN PRINTOUT

**1** When preparing to print the PDF, make sure that you are printing it at 100% and that there is no scaling. Check the settings for page scaling (should be "None") and check the preview to make sure that you will be printing at full size.

Make sure that the box labeled "Auto-Rotate and Center" is unchecked (instructions apply specifically to Adobe Reader; if using another PDF reader, check for similar settings).

**2** To ensure that the pattern has printed at the correct scale, check the size of the TEST SQUARE. The Test Square should be 2 × 2" (5 × 5 cm).

**Test Square**  
2 × 2" [5 × 5 cm]

**3** To begin assembling the pattern, cut off or fold the dotted margin around each page.

**4** The pages are numbered in rows, so the first row of pages is numbered 1a, 1b, 1c, etc. Line up the rows and match the dotted lines together so they overlap. Tape the pages together. Use the illustrated guide to match each piece. Once the pattern is complete, find your size, pin the pattern to the fabric, and follow the coordinating line to cut out or trace the pattern.

### LAYOUT, MARKING & CUTTING GUIDELINES

**1** Find the lines that correspond to your size and trace the pattern pieces, either on tissue paper or directly onto the fabric, using tracing paper and a tracing wheel.

**2** If you are cutting pattern pieces on the fold or cutting two of the same pattern piece, fold the fabric in half, selvedge to selvedge, with right sides facing.

**3** Lay the pattern pieces on the fabric as close together as possible. Double-check that all pattern pieces to be cut "on the fold" are placed on the fold.

**4** Make sure all pattern pieces are placed on the fabric with the grainline running parallel to the lengthwise grain.

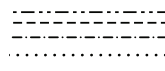
**5** Copy all pattern markings onto the wrong side of the fabric.

**6** Read through all cutting instructions listed in the project instructions for directions on how many pattern pieces to cut out of your fabric and interfacing.

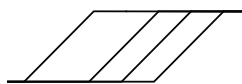
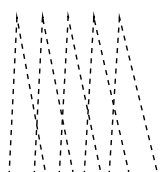
**7** Use weights to hold the pattern pieces down and use pins to secure the corners as needed.

**8** Cut the pieces slowly and carefully.

### PATTERN SYMBOLS & MARKINGS



↵ place on fold ↵



**CUTTING LINES** Multisize patterns have different cutting lines for each size.

**PLACE ON FOLD BRACKET** This is a grainline marking with arrows pointing to the edge of the pattern. Place on the fold of the fabric so that your finished piece will be twice the size of the pattern piece, without adding a seam.

**GRAINLINE** The double-ended arrow should be parallel to the lengthwise grain or fold.

**NOTCHES** Notches are triangle-shaped symbols used for accurately matching seams. Pieces to be joined will have corresponding notches.

**DARTS** Dashed lines and dots mark darts. The dashed lines show where the stitching will be, and the dot shows the position of the dart point (signaling the point, near the end of the dart, where your stitching should taper down to the end).

**DRILL HOLES** Circles with crossed lines inside indicate an area where a mark needs to be made, often indicating dart points, but otherwise explained in the pattern instructions.

**SLASH MARKS** Long lines indicate an area to make a slash. Further instructions for making the slash will be included in the pattern instructions.

## CUTTING LAYOUT

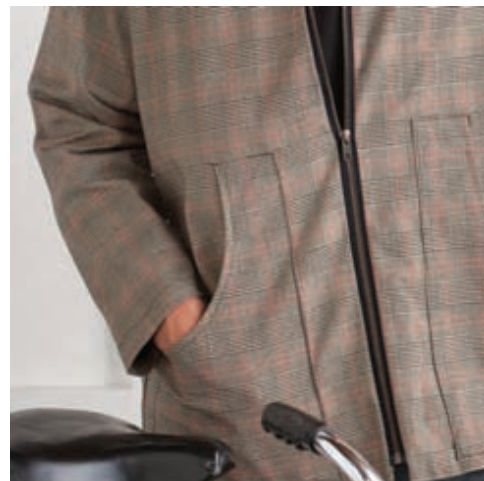
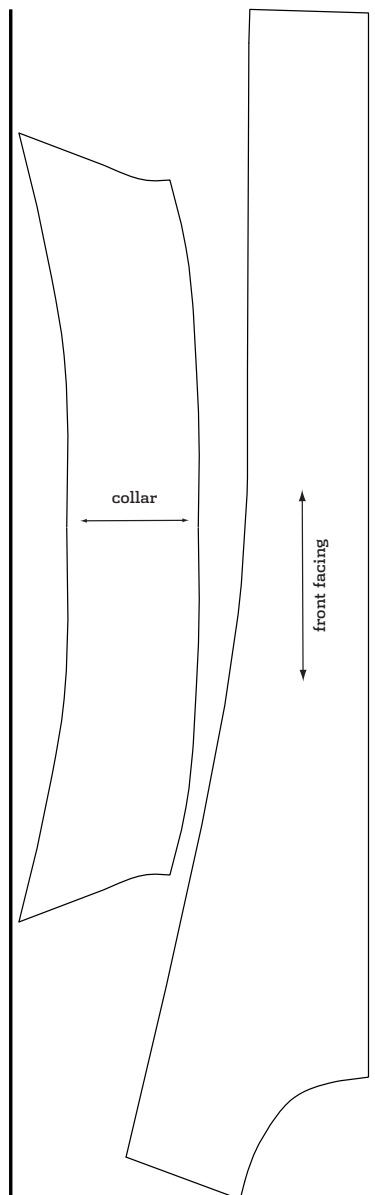
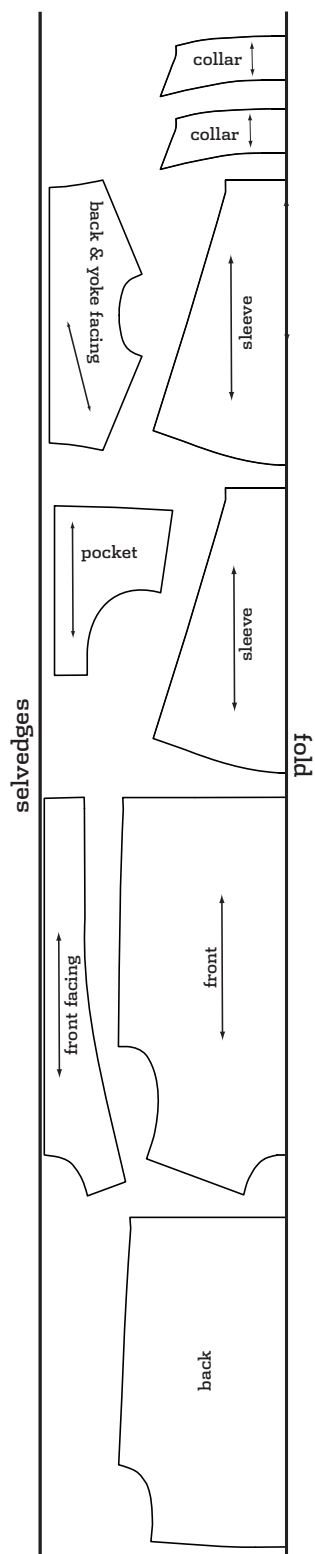
**45" (114.5 cm)**

**main**

XS, S, M, L, XL

**interfacing**

XS, S, M, L, XL



### SIZE CHART

	CHEST	LENGTH (center back)
S	34-36" (86.4-91.5 cm)	30" (76 cm)
M	37-39" (94-99 cm)	31" (79 cm)
L	40-42" (101.5-106.5 cm)	32" (81.5 cm)
XL	43-45" (109-114.5 cm)	33" (84 cm)

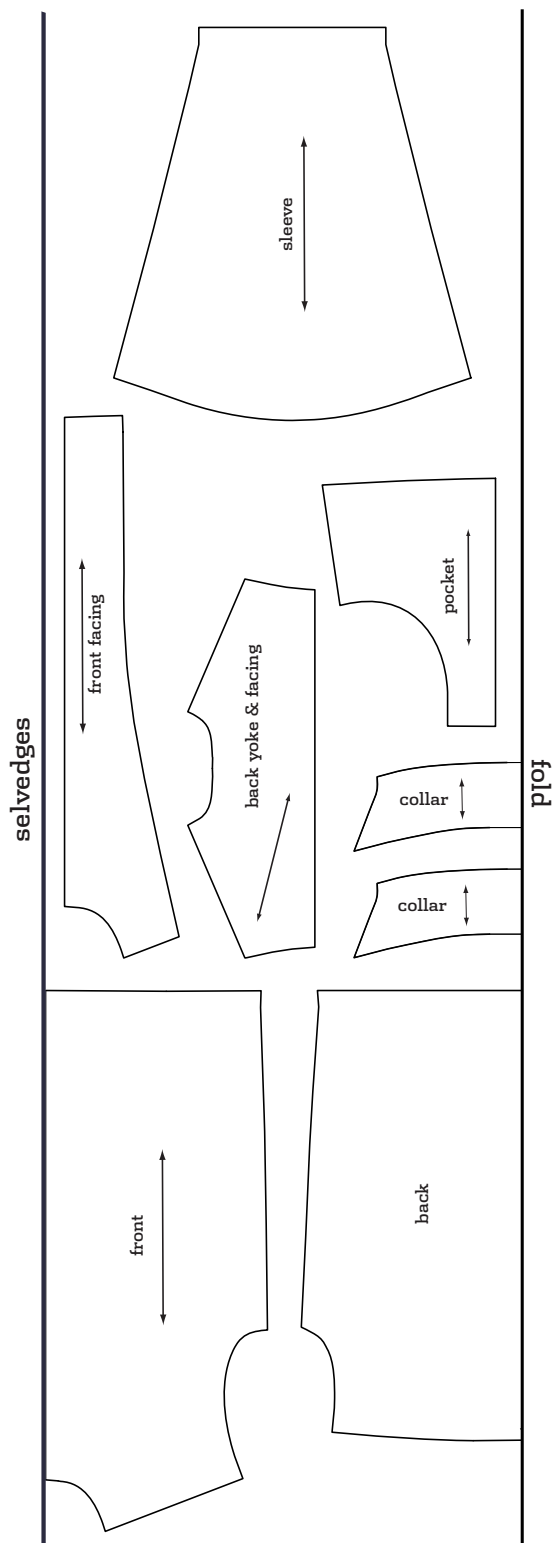


## CUTTING LAYOUT

**60" (152.5 cm)**

**main**

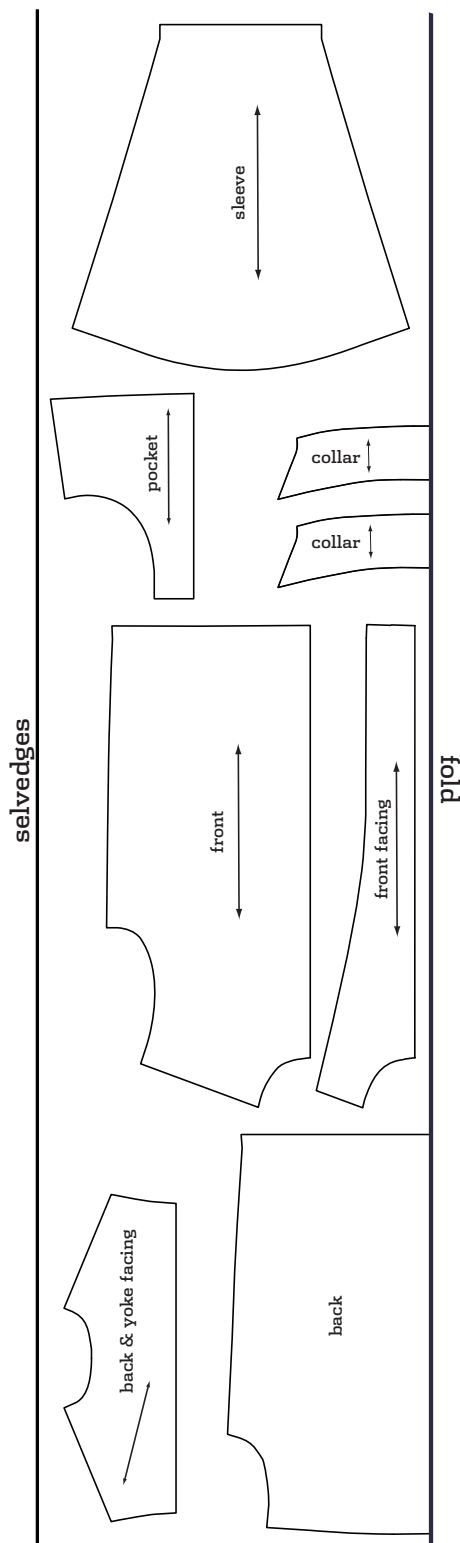
S, M



**60" (152.5 cm)**

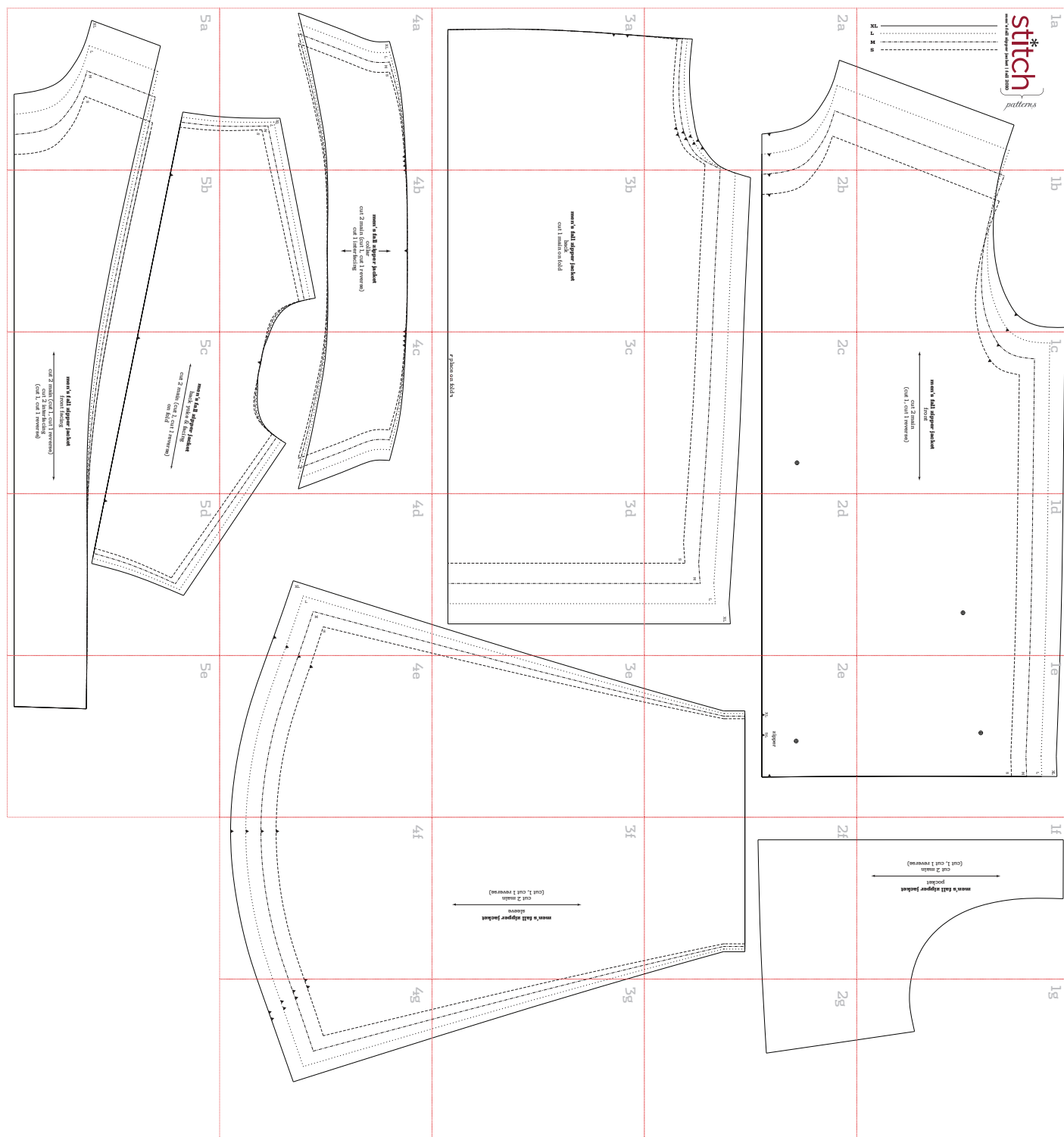
**main**

L, XL



### SIZE CHART

See previous  
page 3



1a

# stitch\*

men's fall zipper jacket | fall 2010

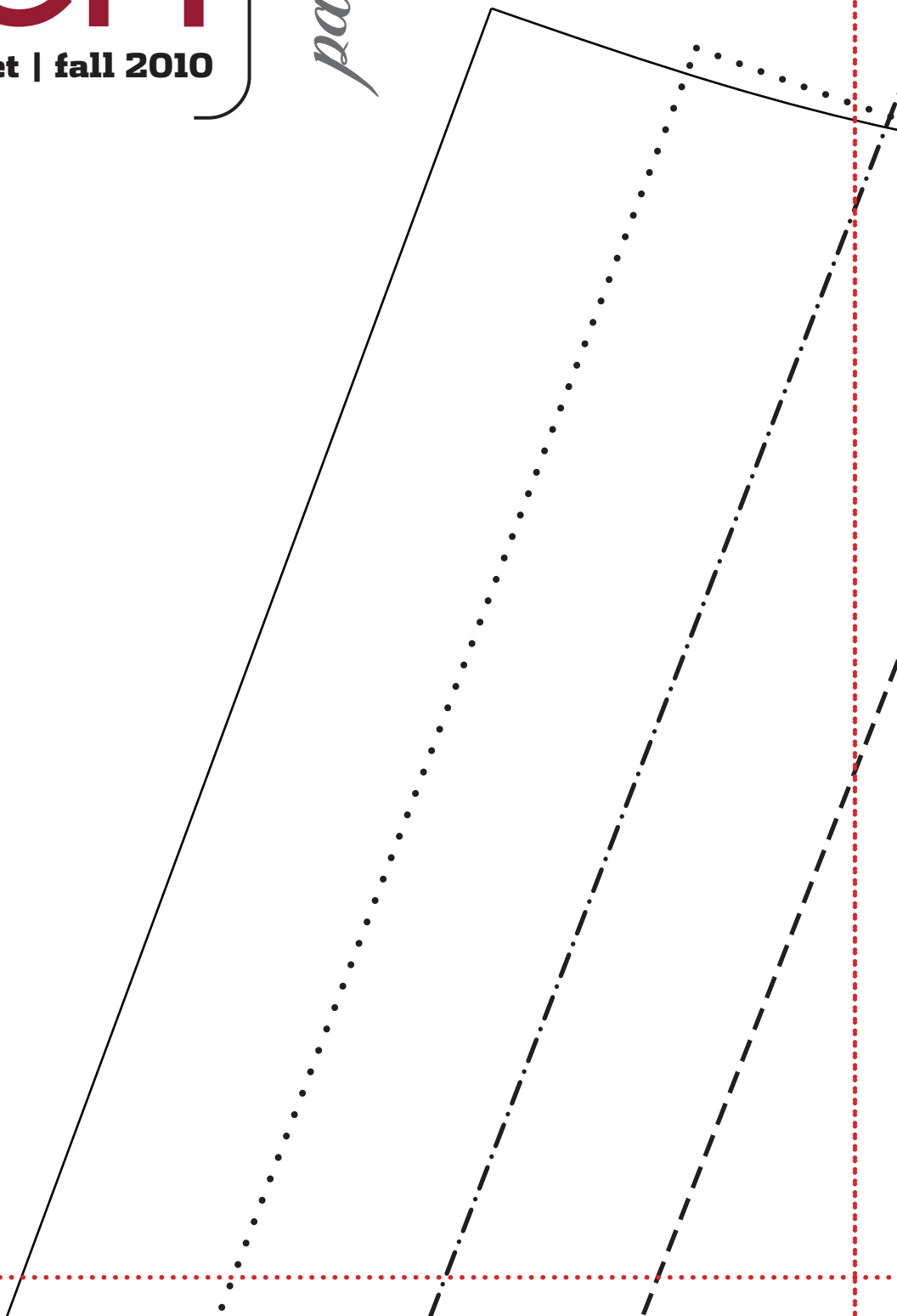
*patterns*

**XL**

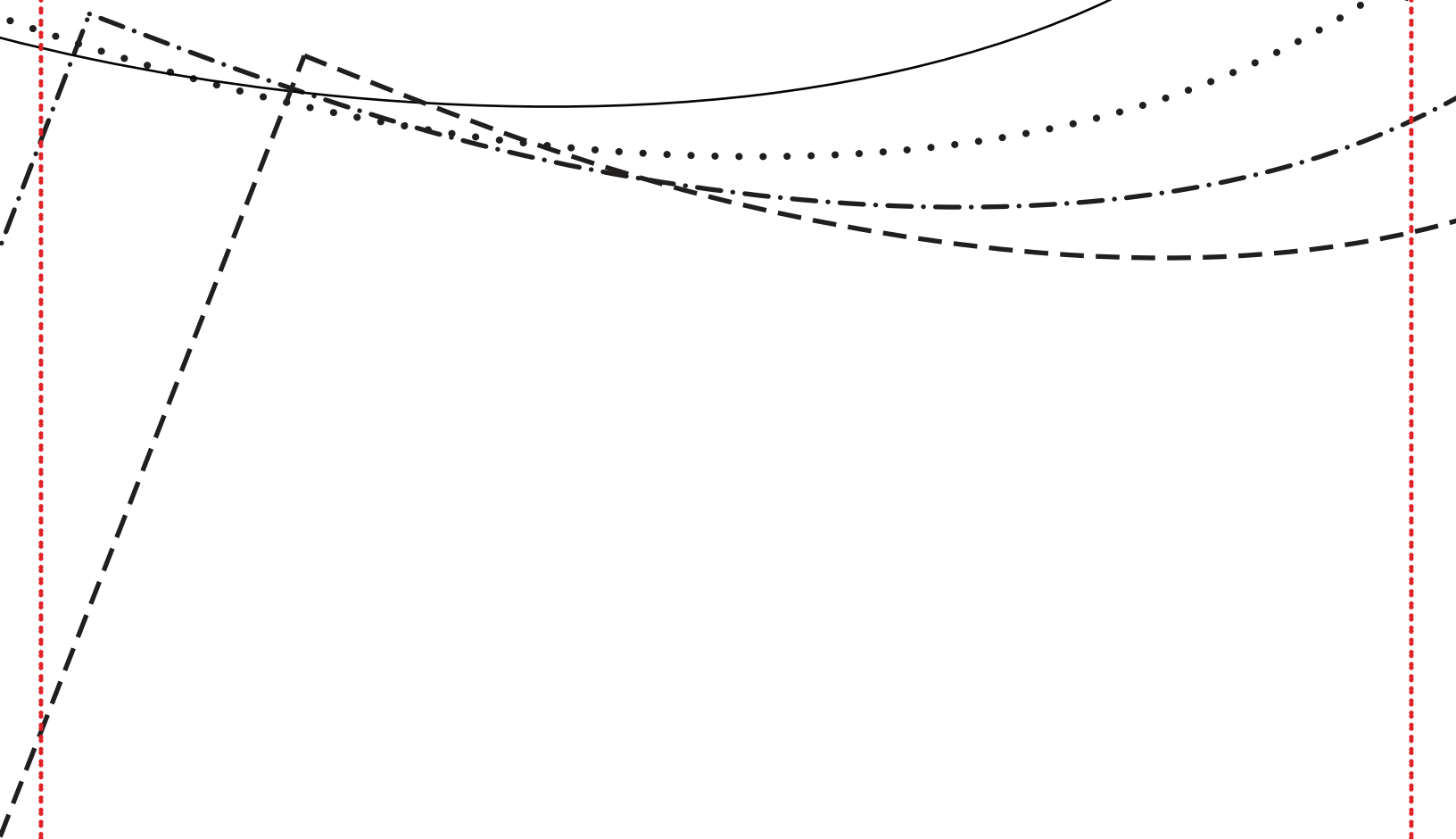
**L**

**M**

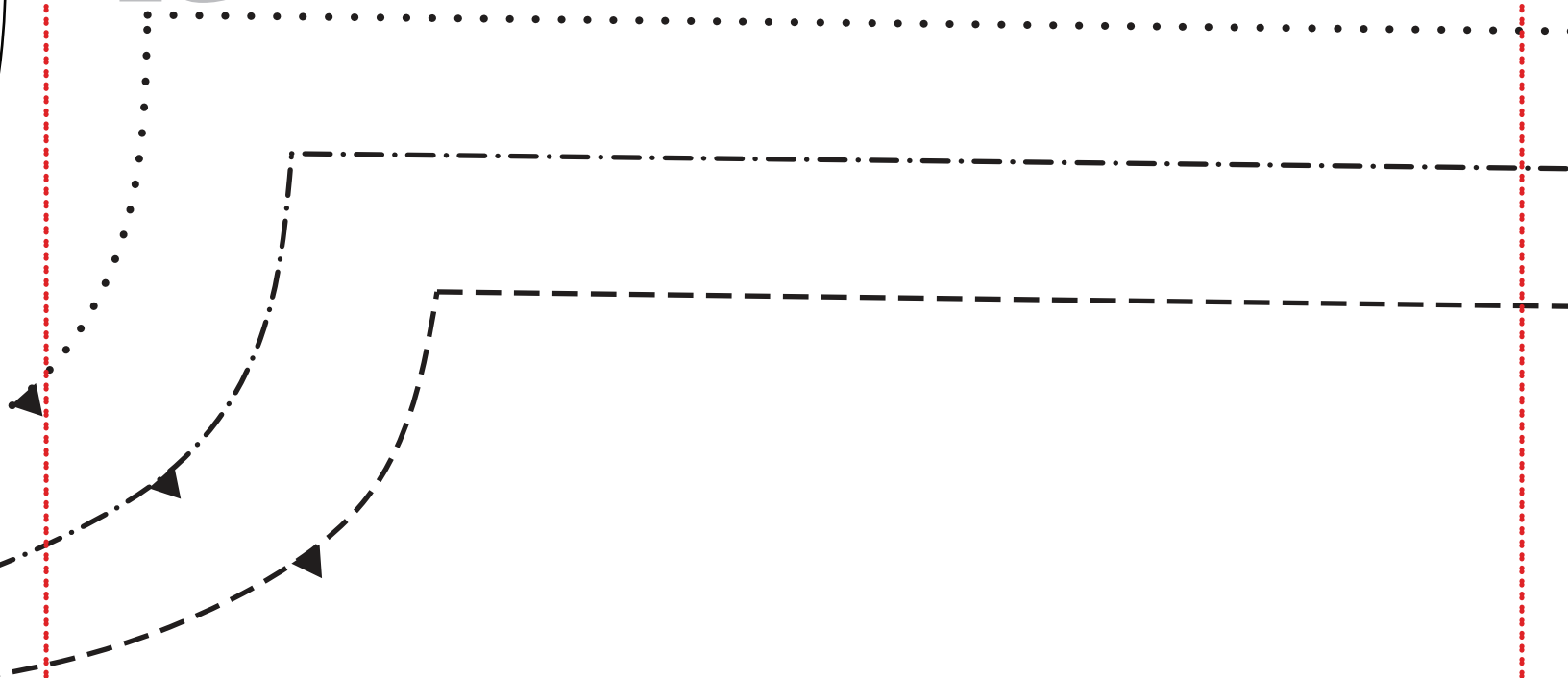
**S**



1b



1c



**men's fall zipper jacket**  
front



cut 2 main  
(cut 1, cut 1 reverse)



1d



1e

XL

L

M

S

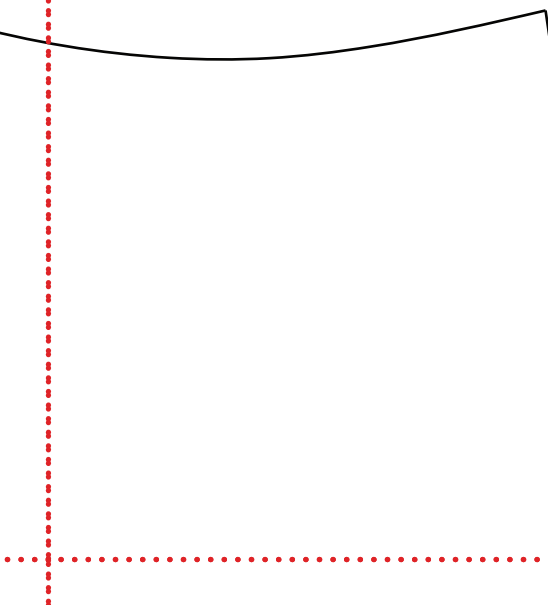


1f

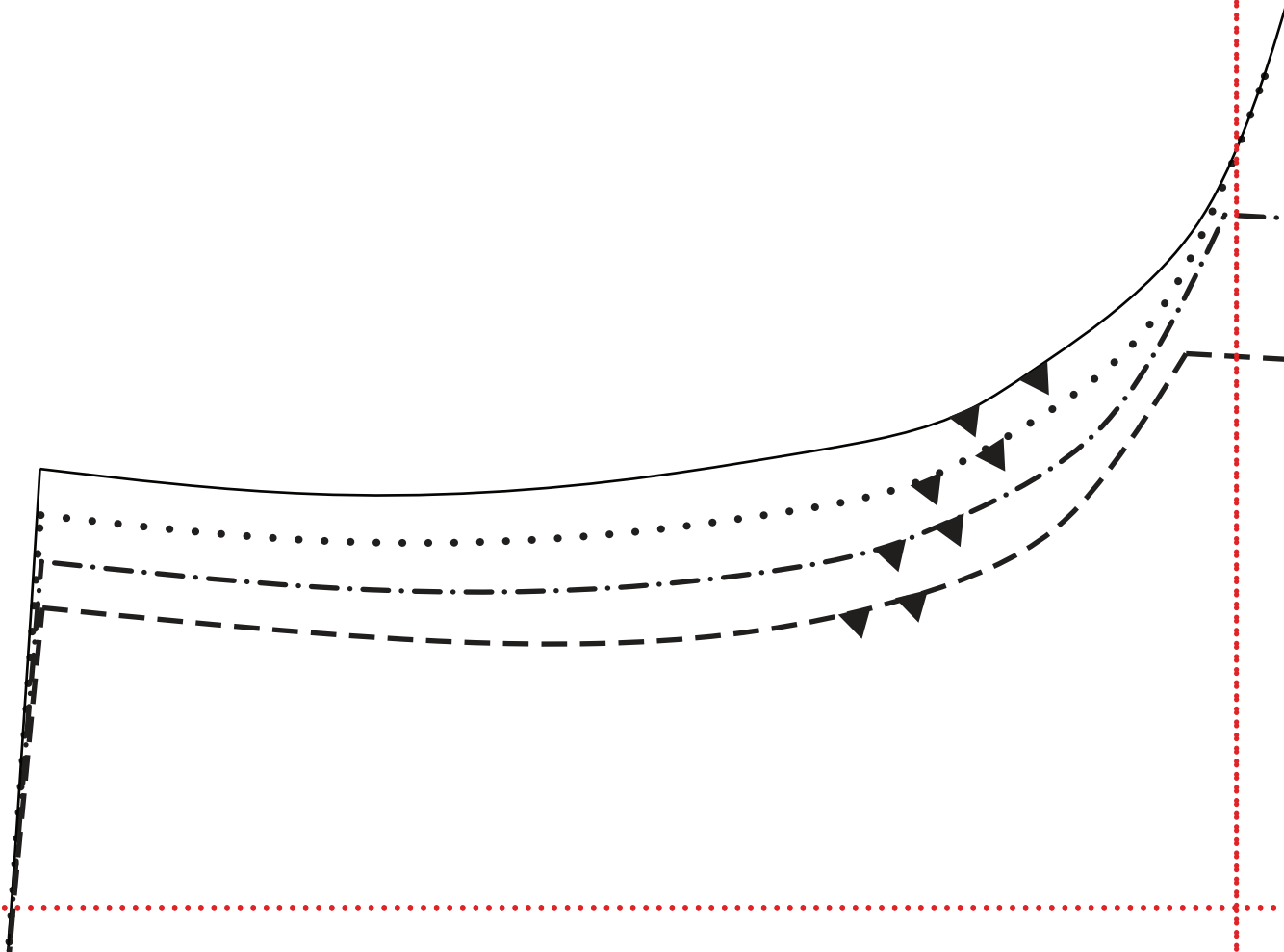
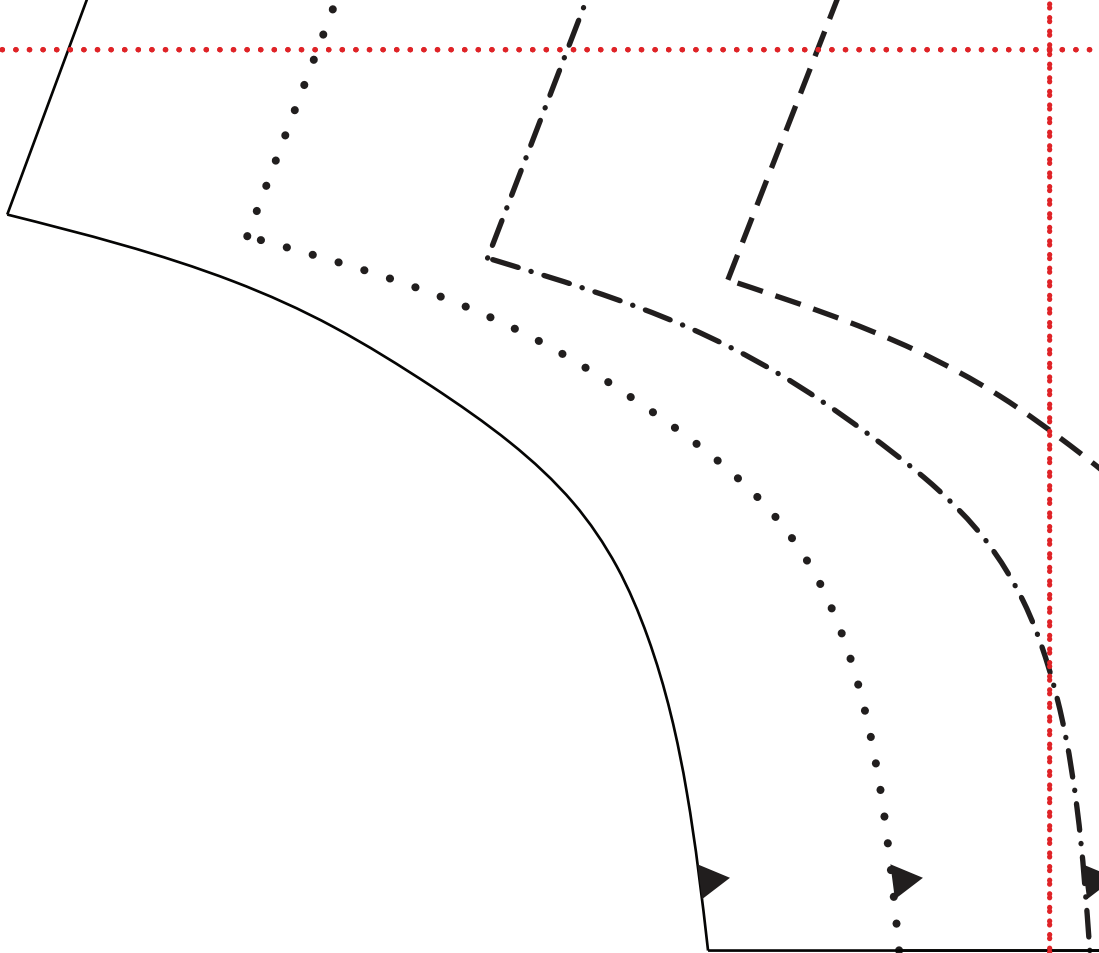
**men's fall zipper jacket**  
pocket  
cut 2 main  
(cut 1, cut 1 reverse)



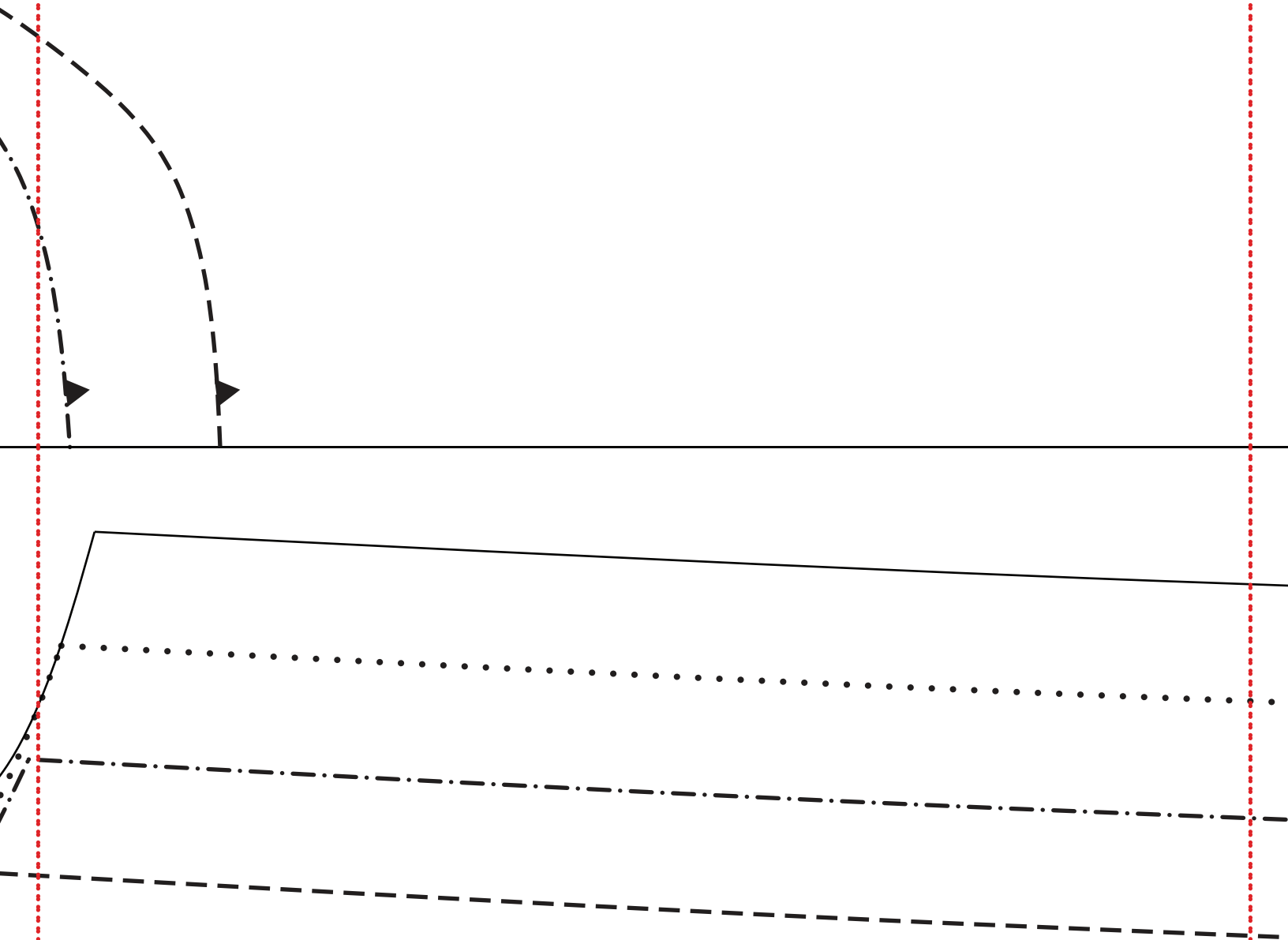
lg



2a



2b

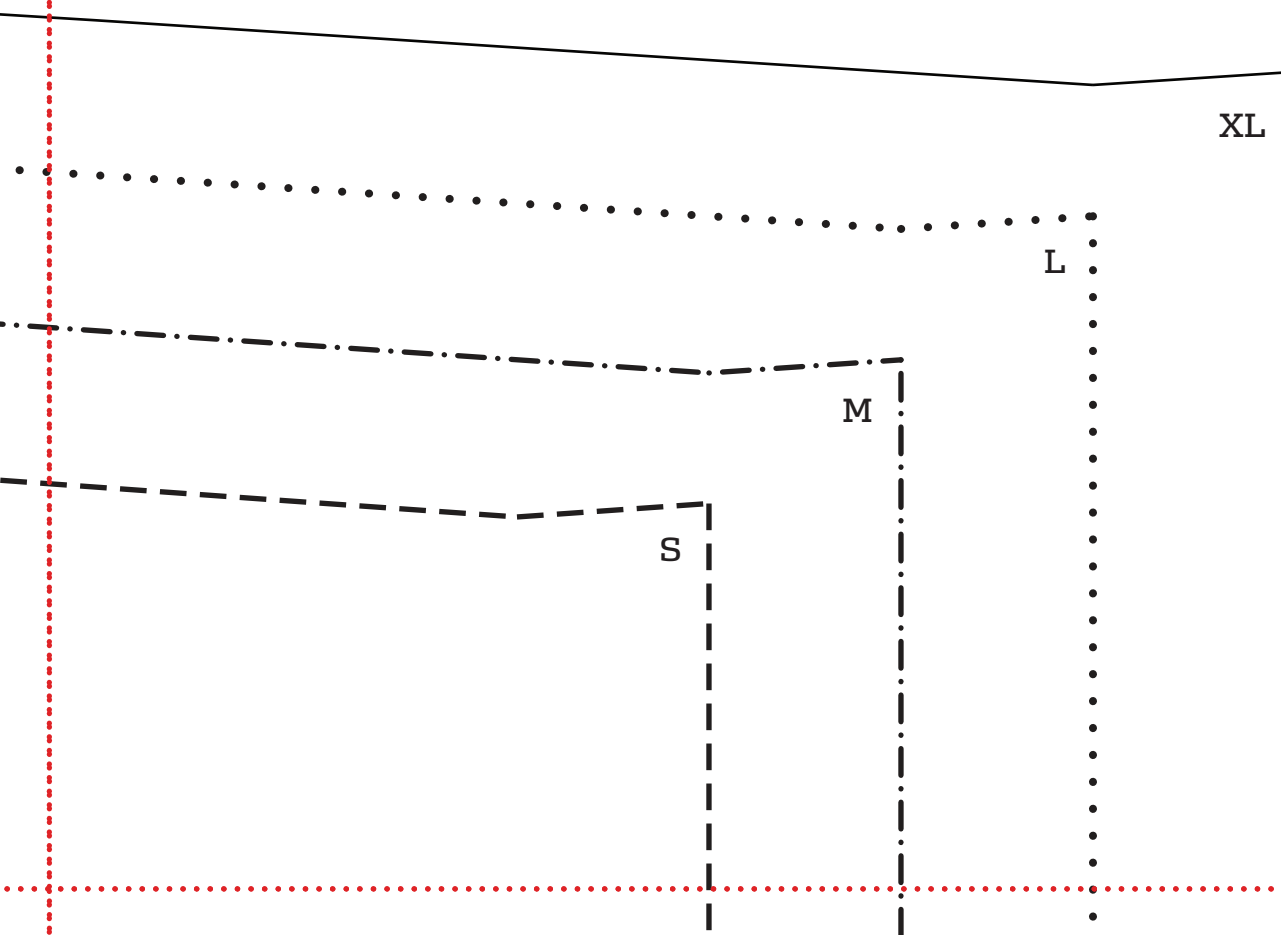




2c



2d



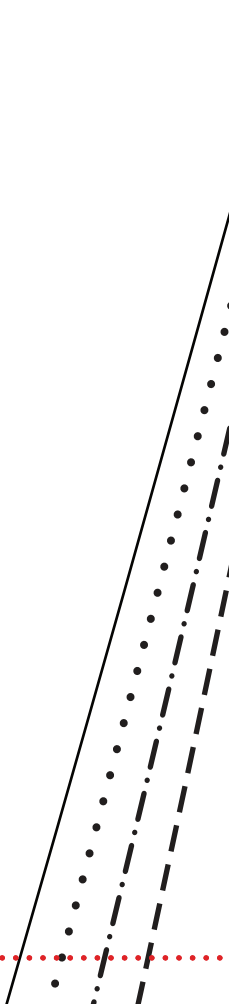
2e



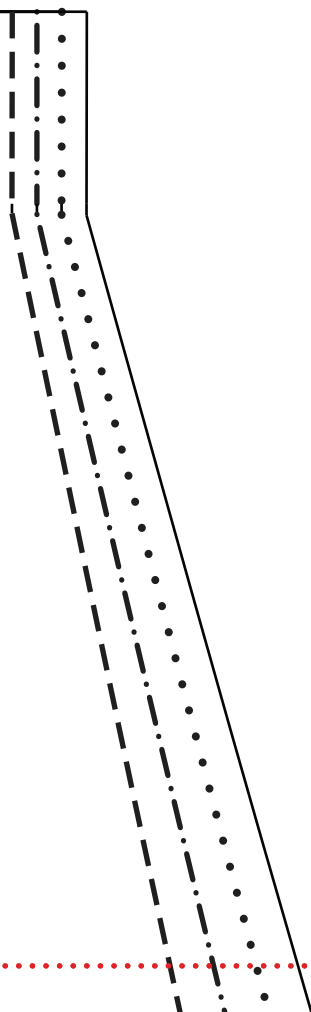
zipper

XL

S-L

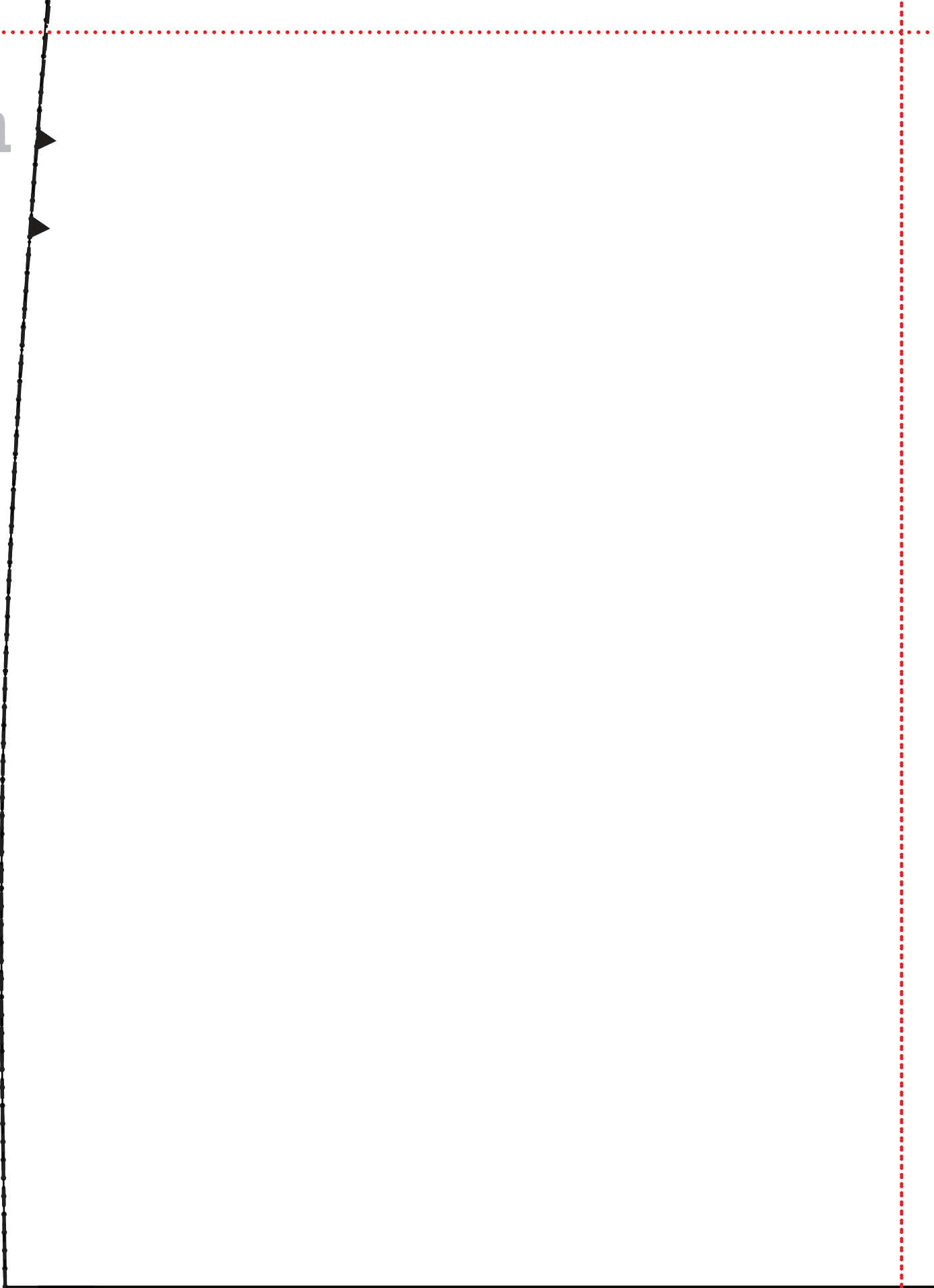


2f



2g

3a





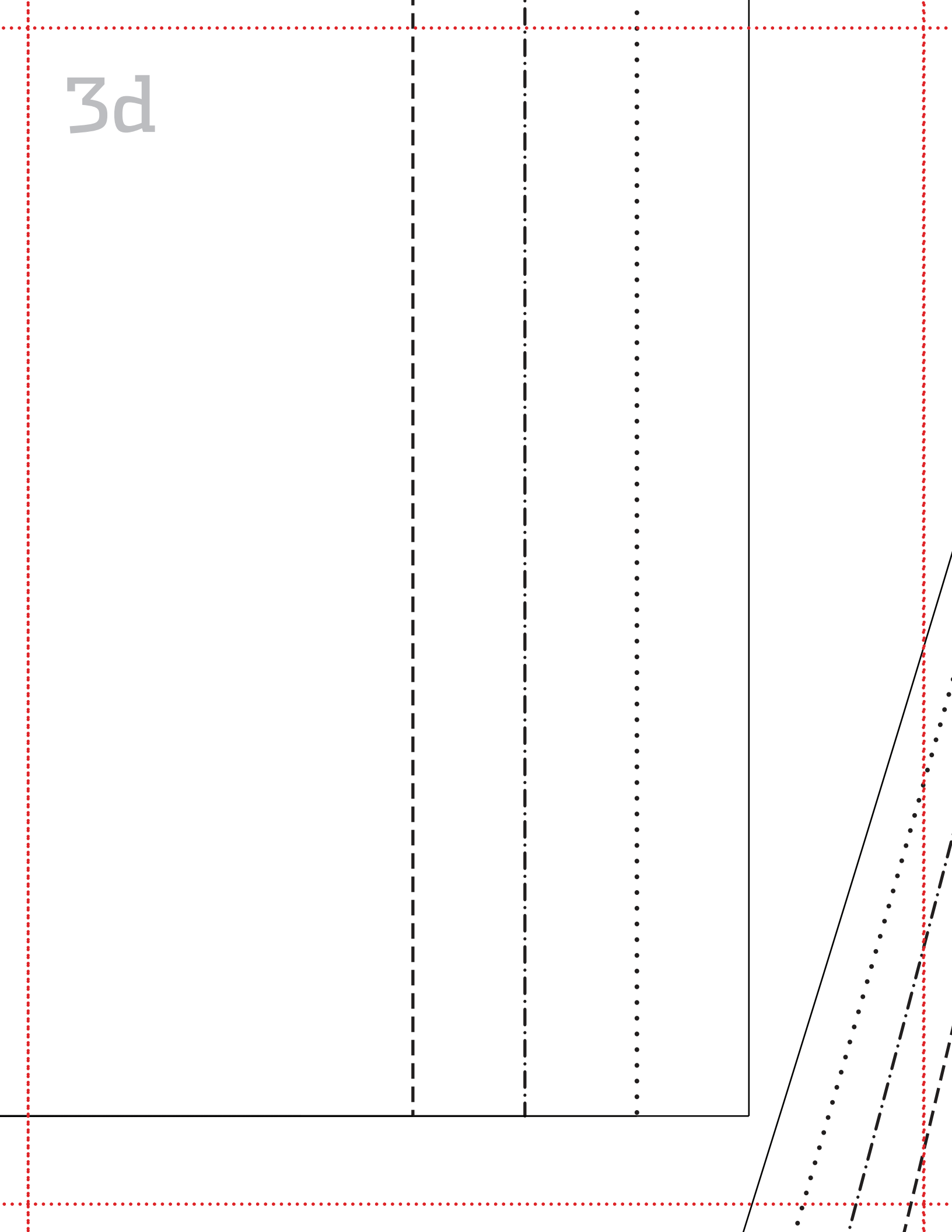
3b

**men's fall zipper jacket**  
back  
cut 1 main on fold

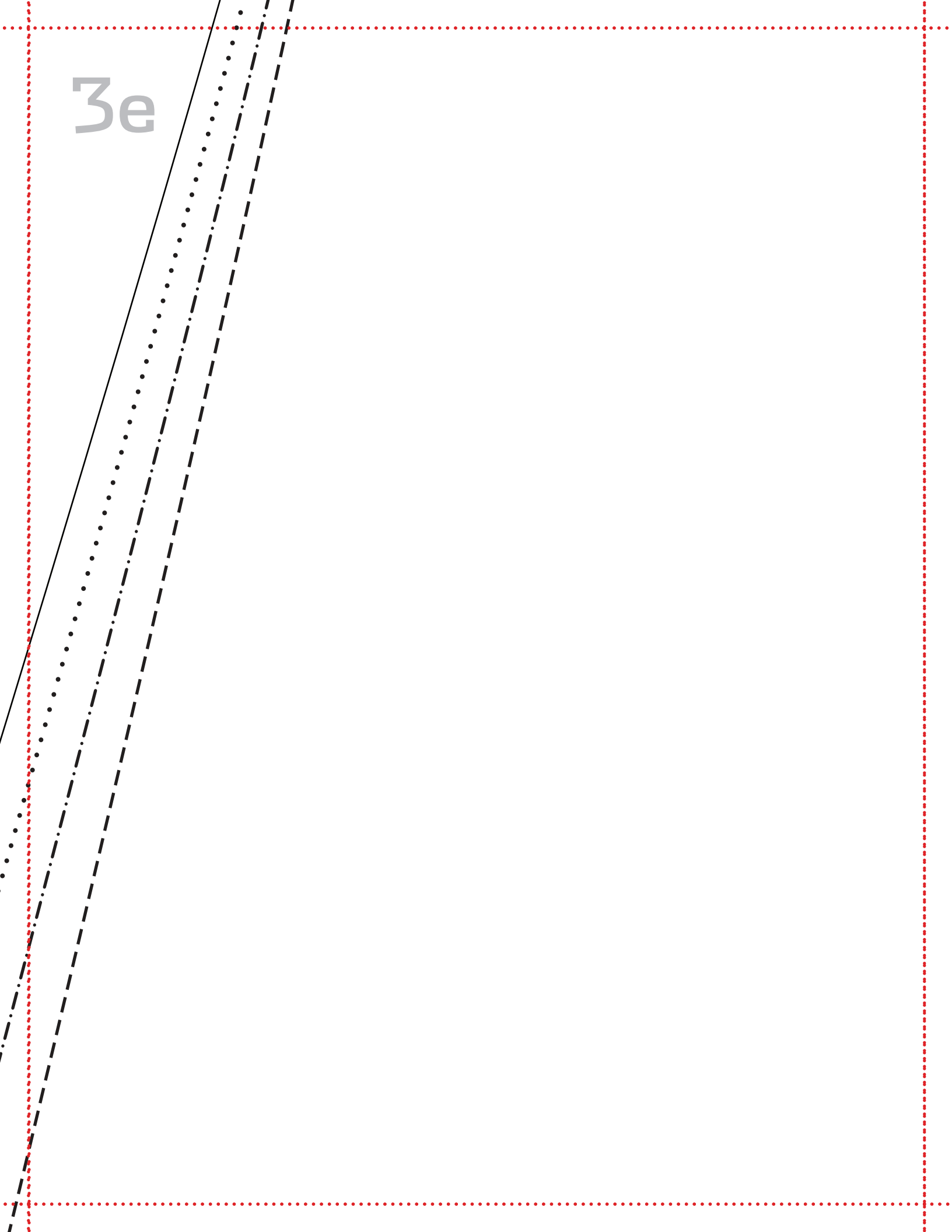
3c

↴ place on fold ↴

3d



3e



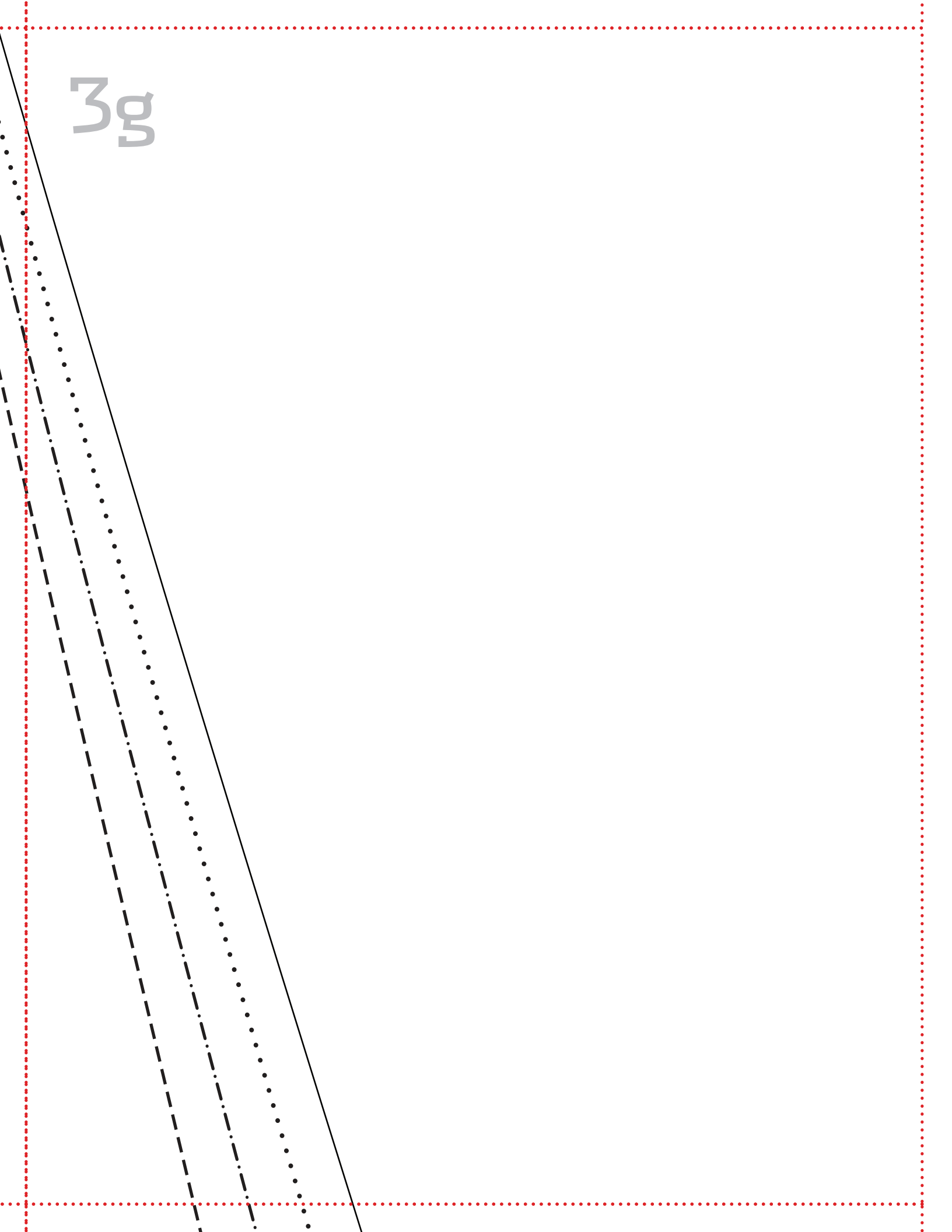
3f

**men's fall zipper jacket**  
sleeve

cut 2 main  
(cut 1, cut 1 reverse)

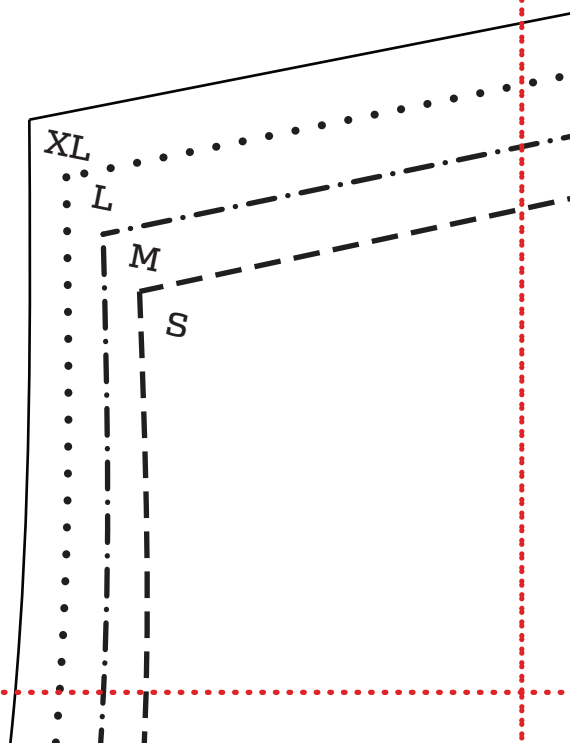
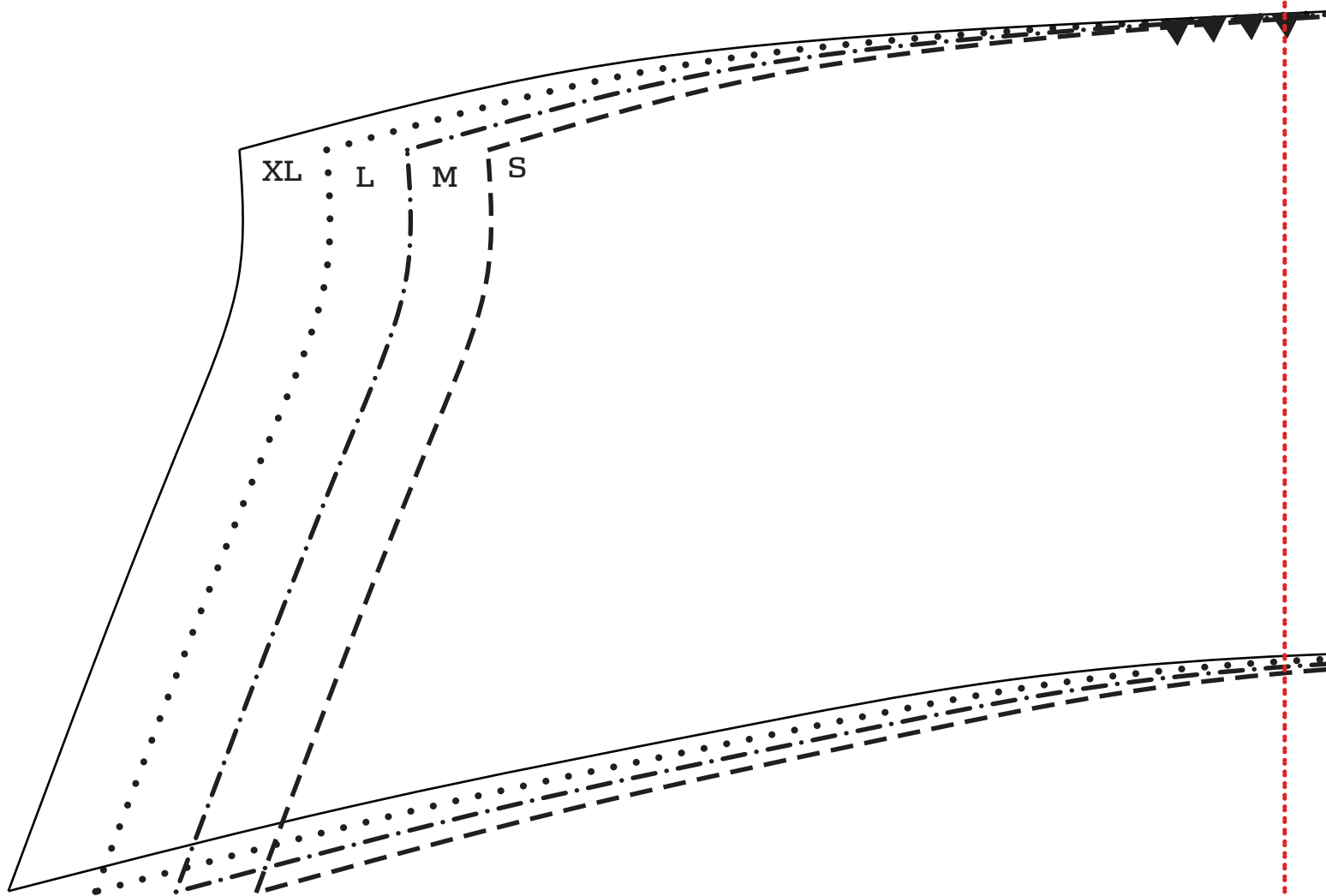


3g





4a



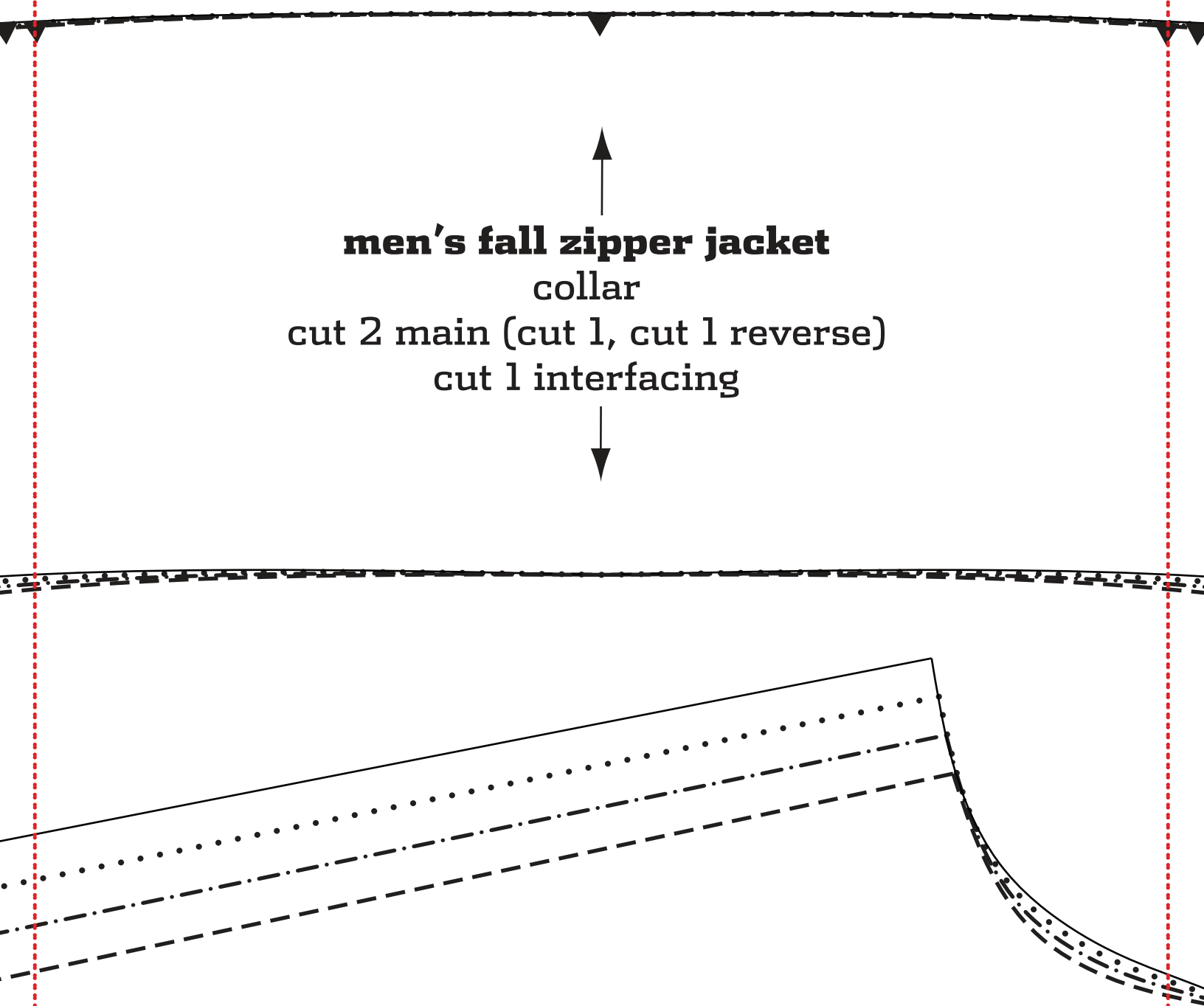
4b

**men's fall zipper jacket**

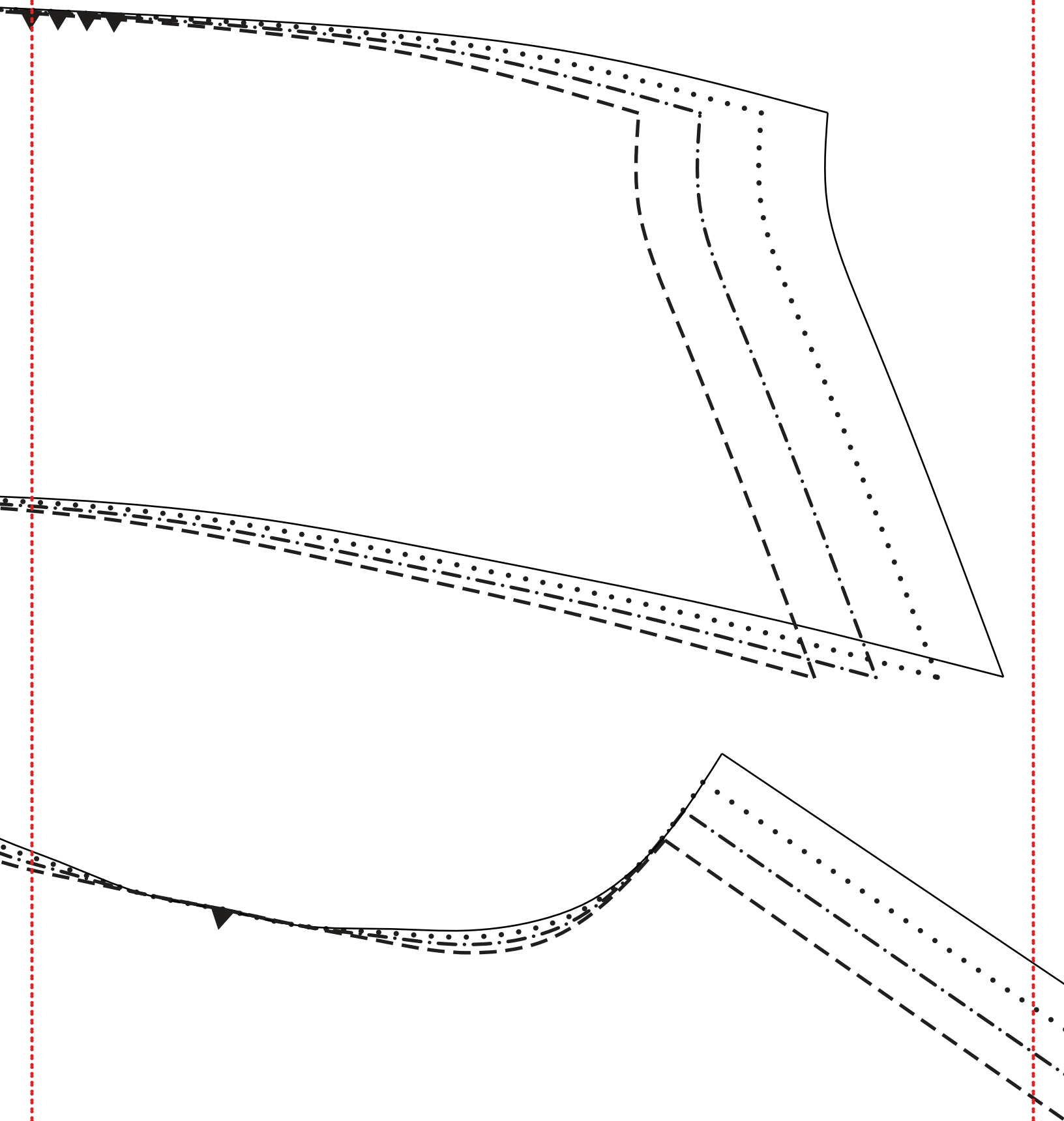
collar

cut 2 main (cut 1, cut 1 reverse)

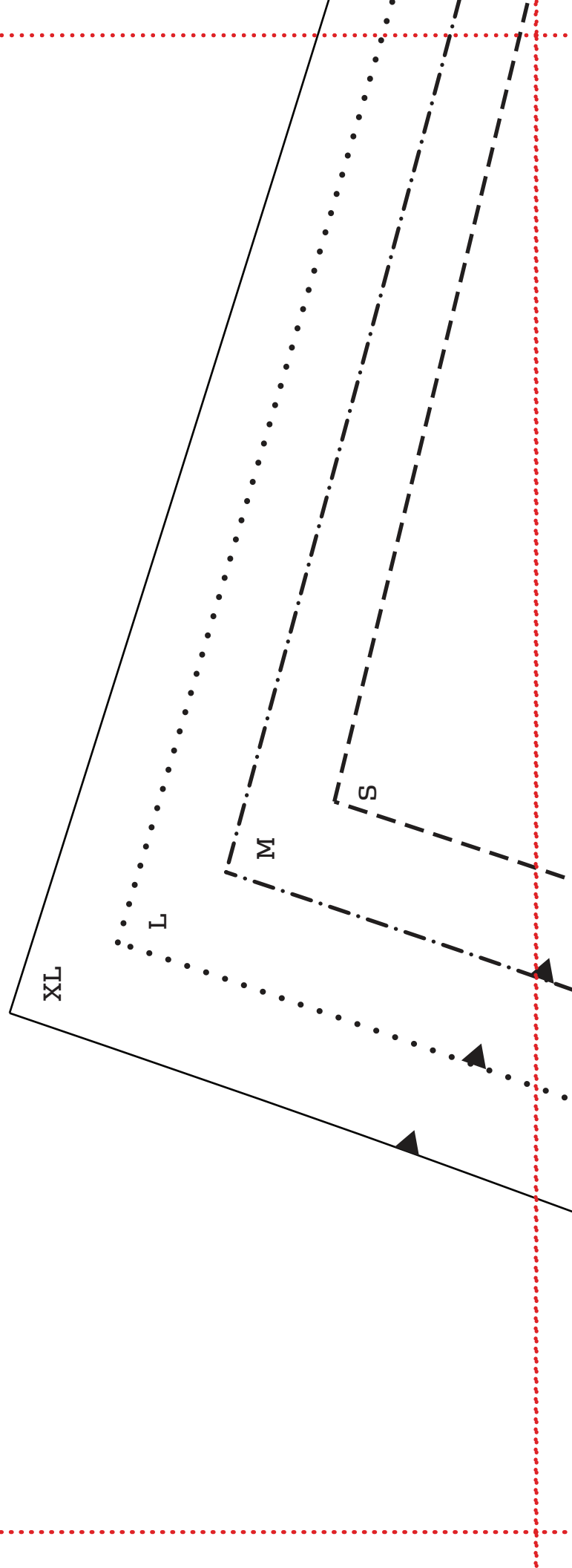
cut 1 interfacing



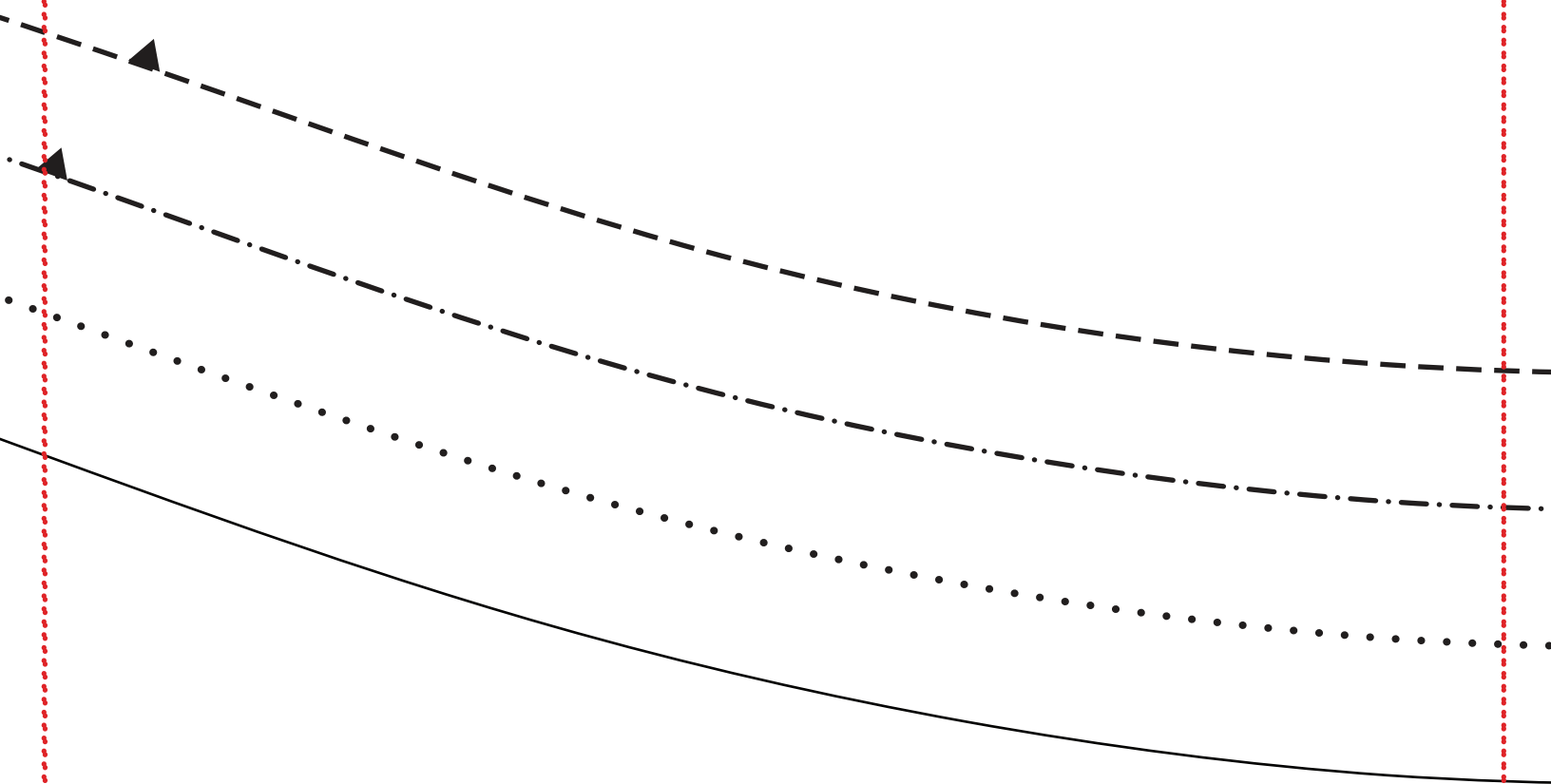
4c



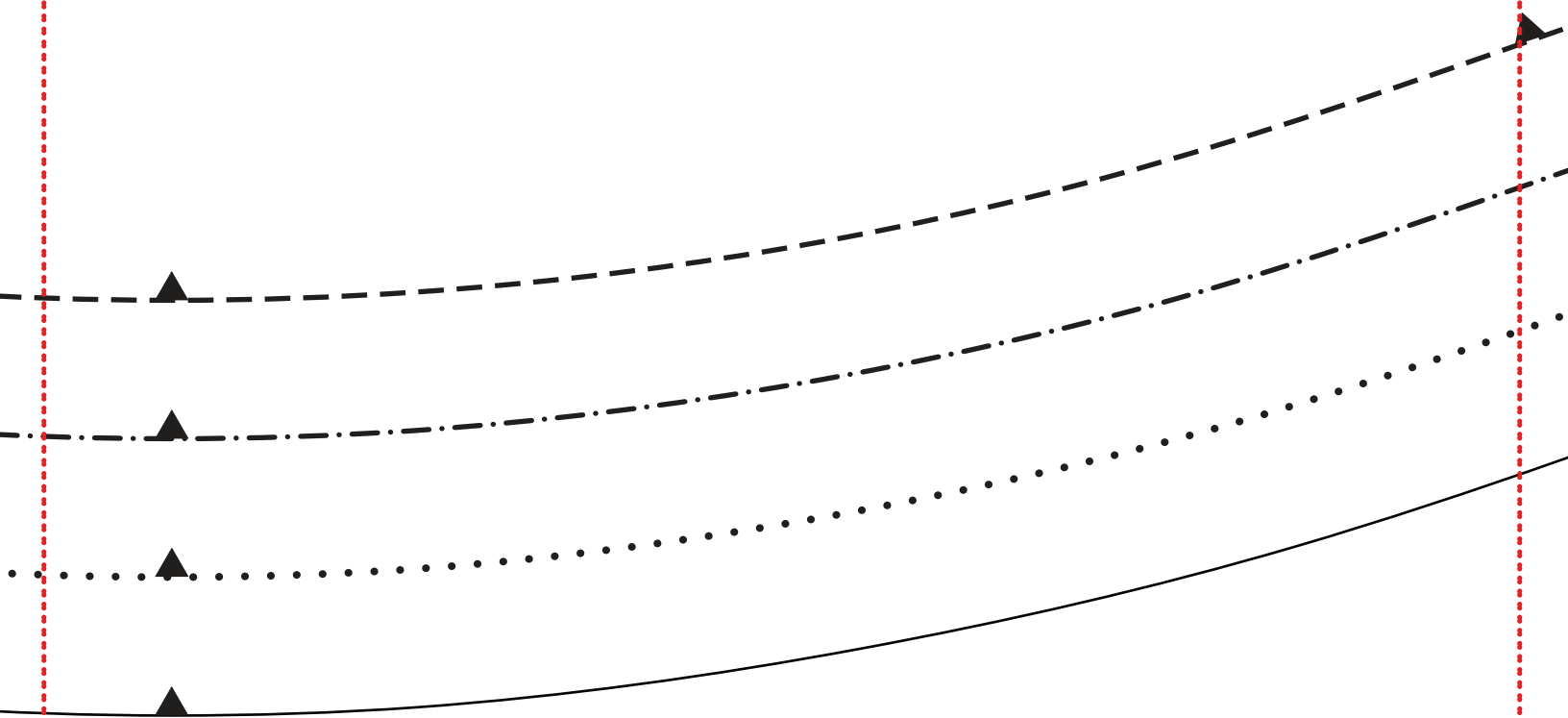
4d



4e

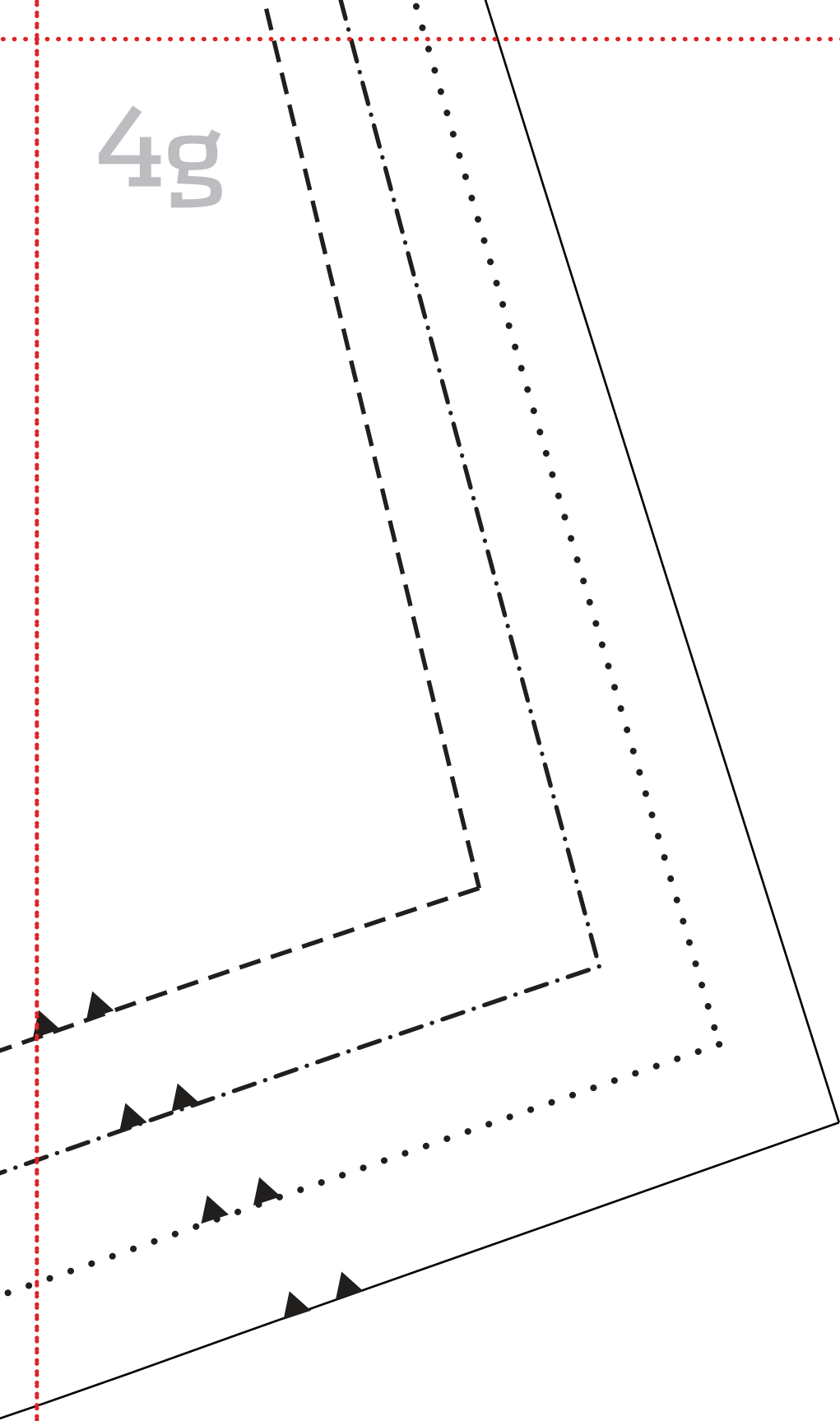


4f

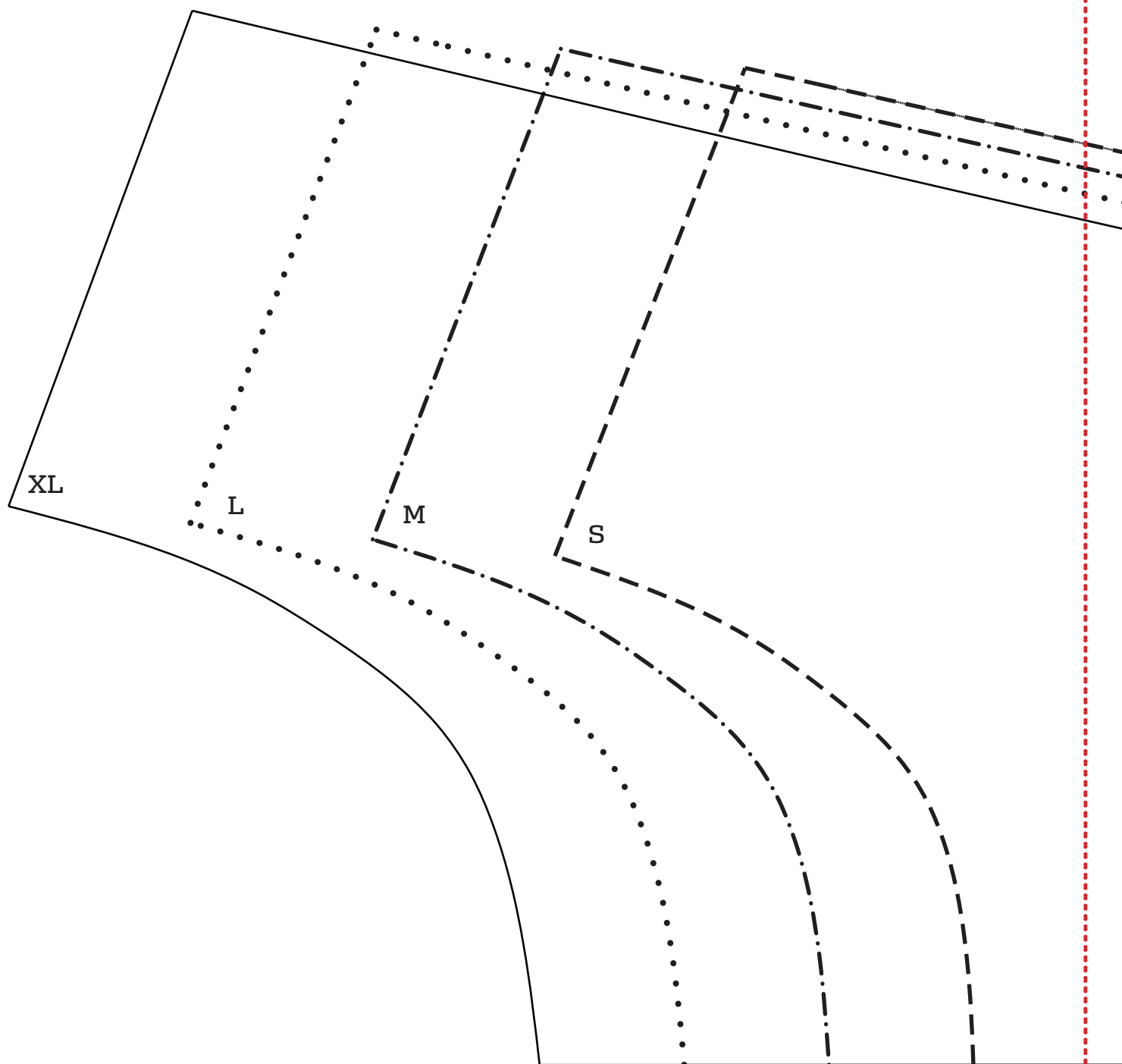




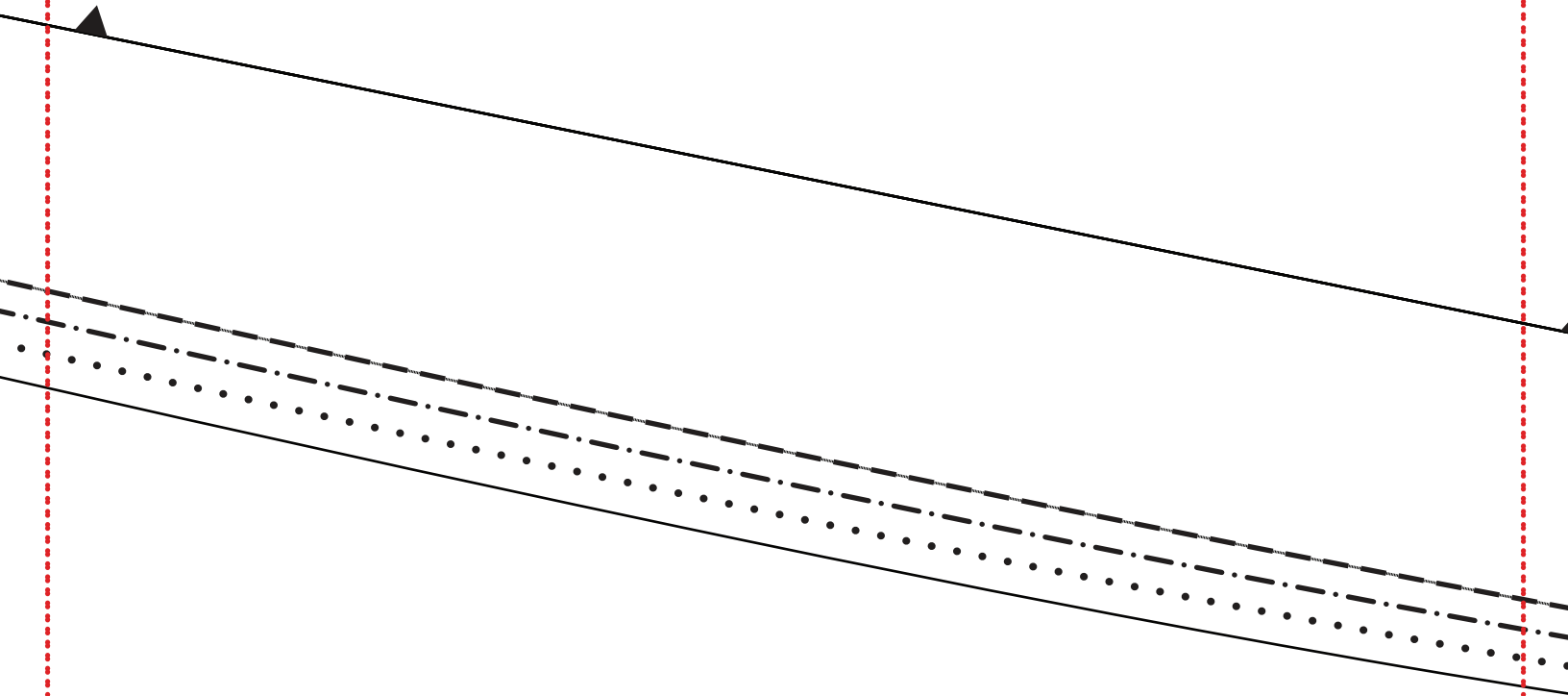
4g



5a



5b

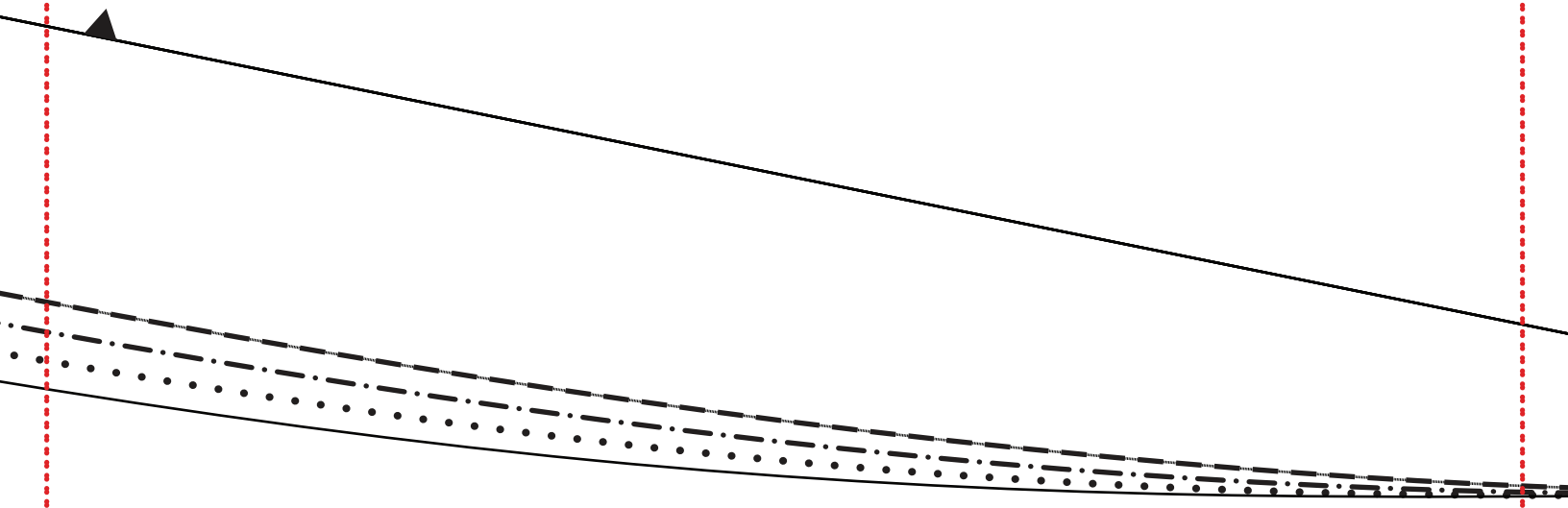


5c

**men's fall zipper jacket**

back yoke & facing

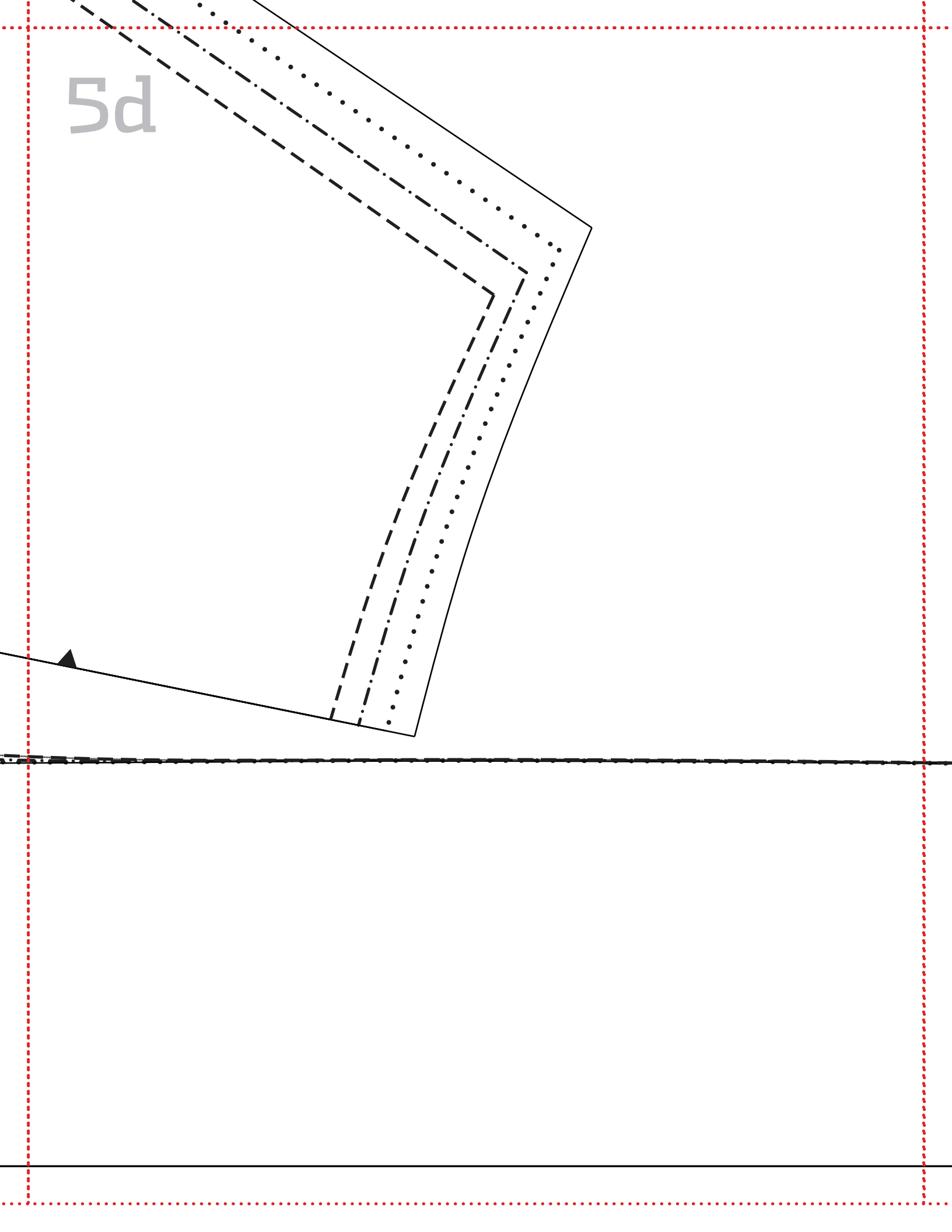
cut 2 main (cut 1, cut 1 reverse)  
on fold



**men's fall zipper jacket**  
front facing

cut 2 main (cut 1, cut 1 reverse)  
cut 2 interfacing  
(cut 1, cut 1 reverse)

5d



5e

