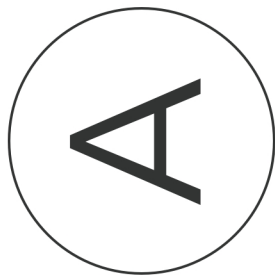


1

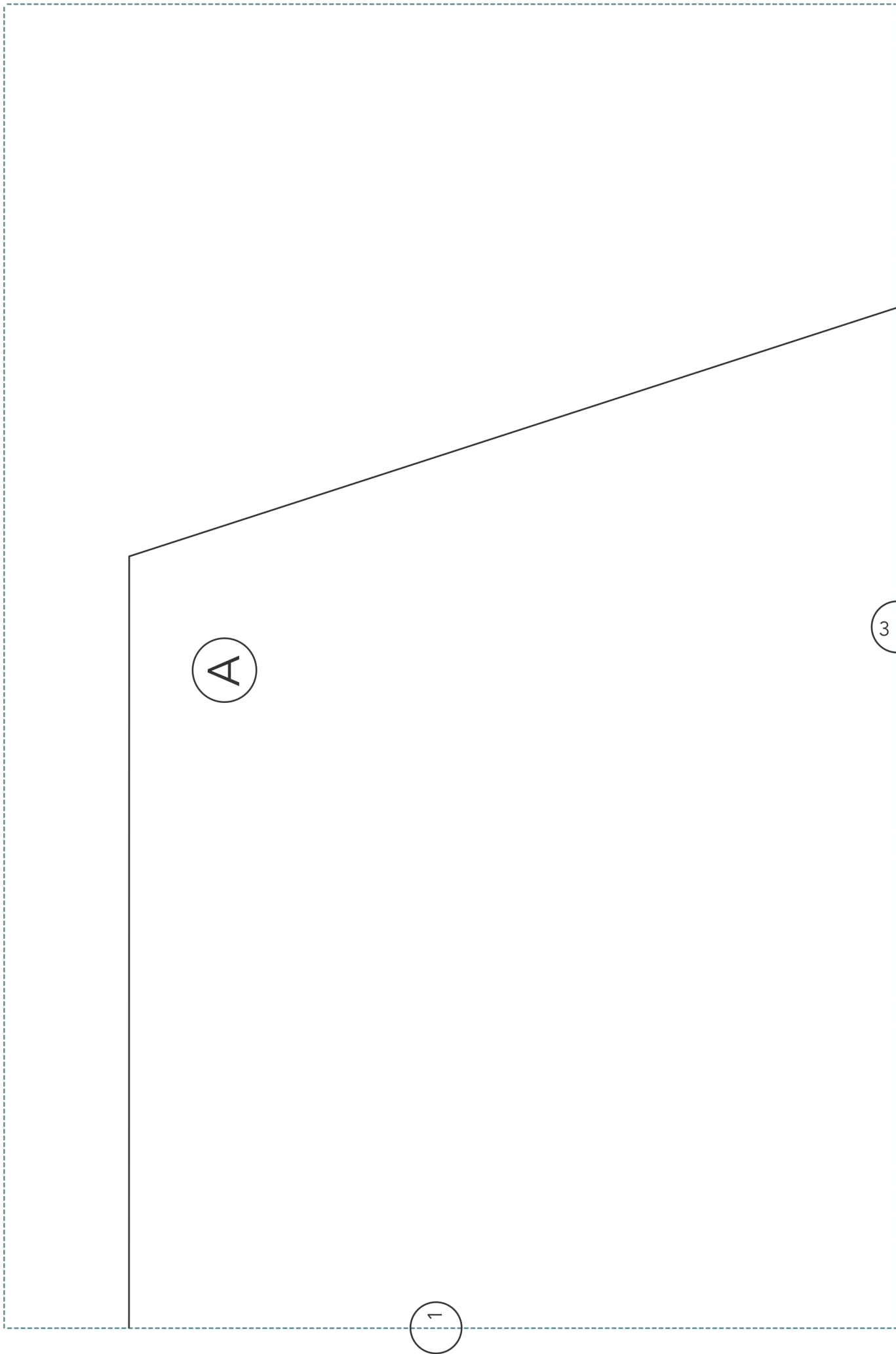


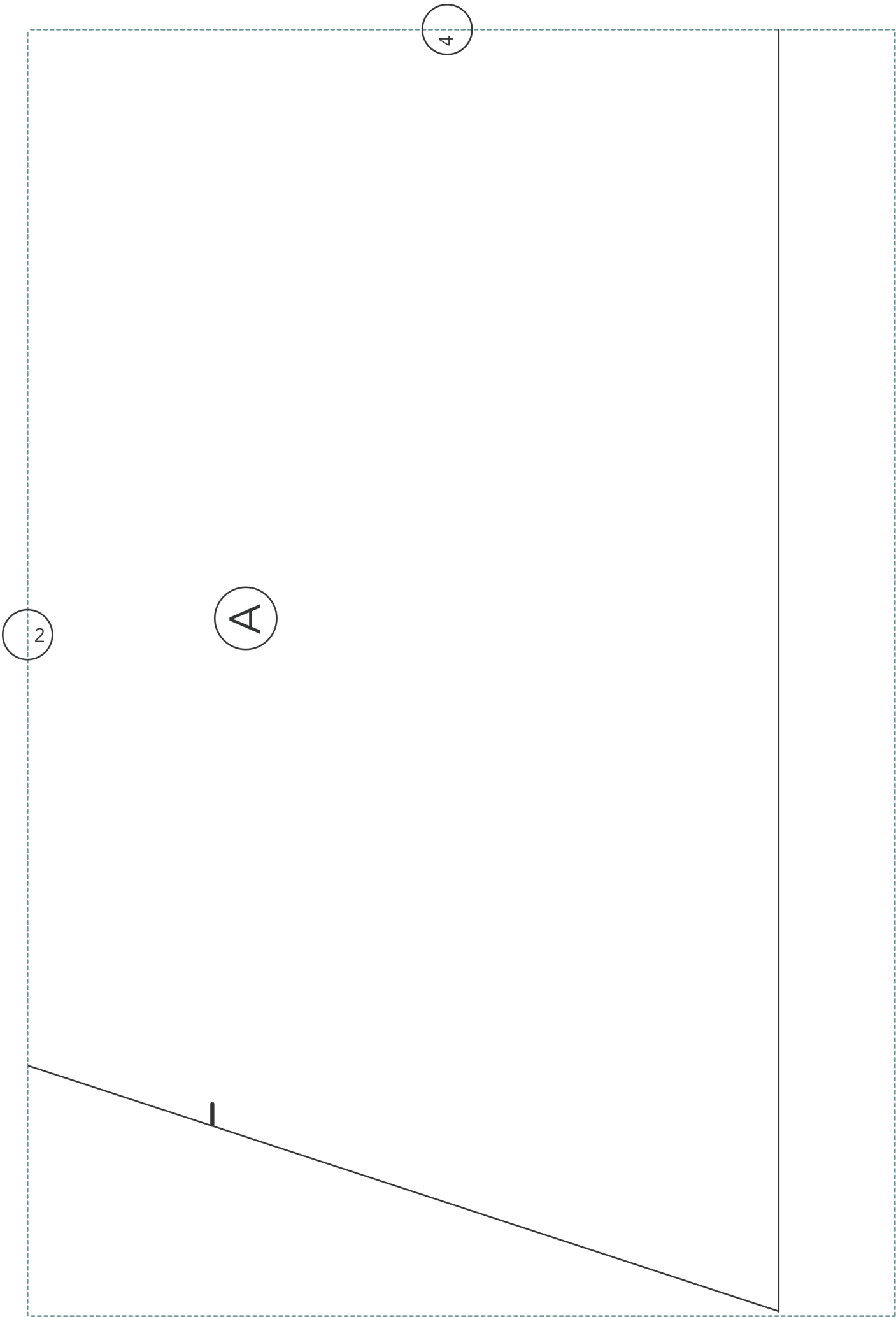
Origami Tasche - Außentasche

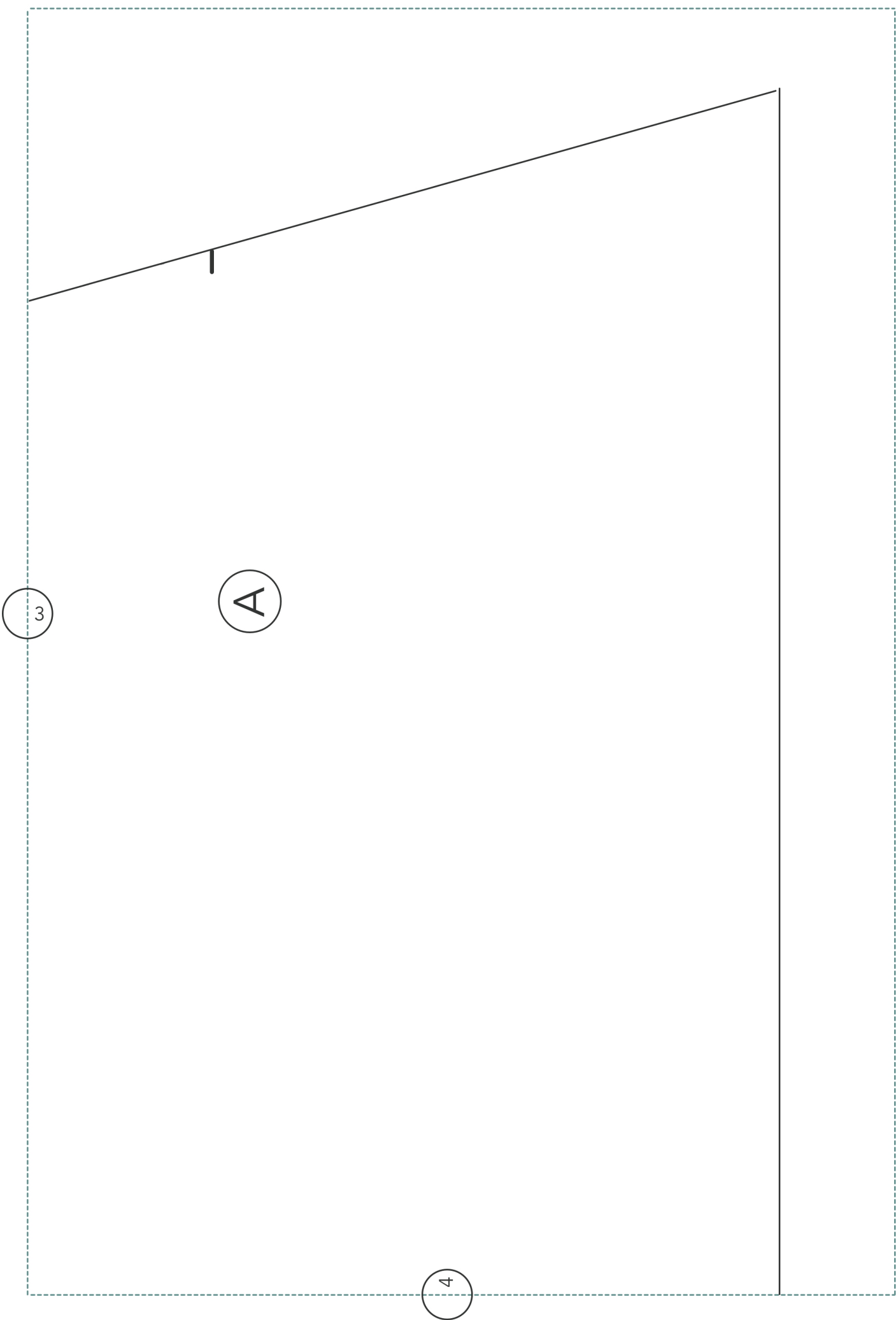
2 x Kunstleder
(inkl. Nahtzugabe)

1 x 1 cm

2







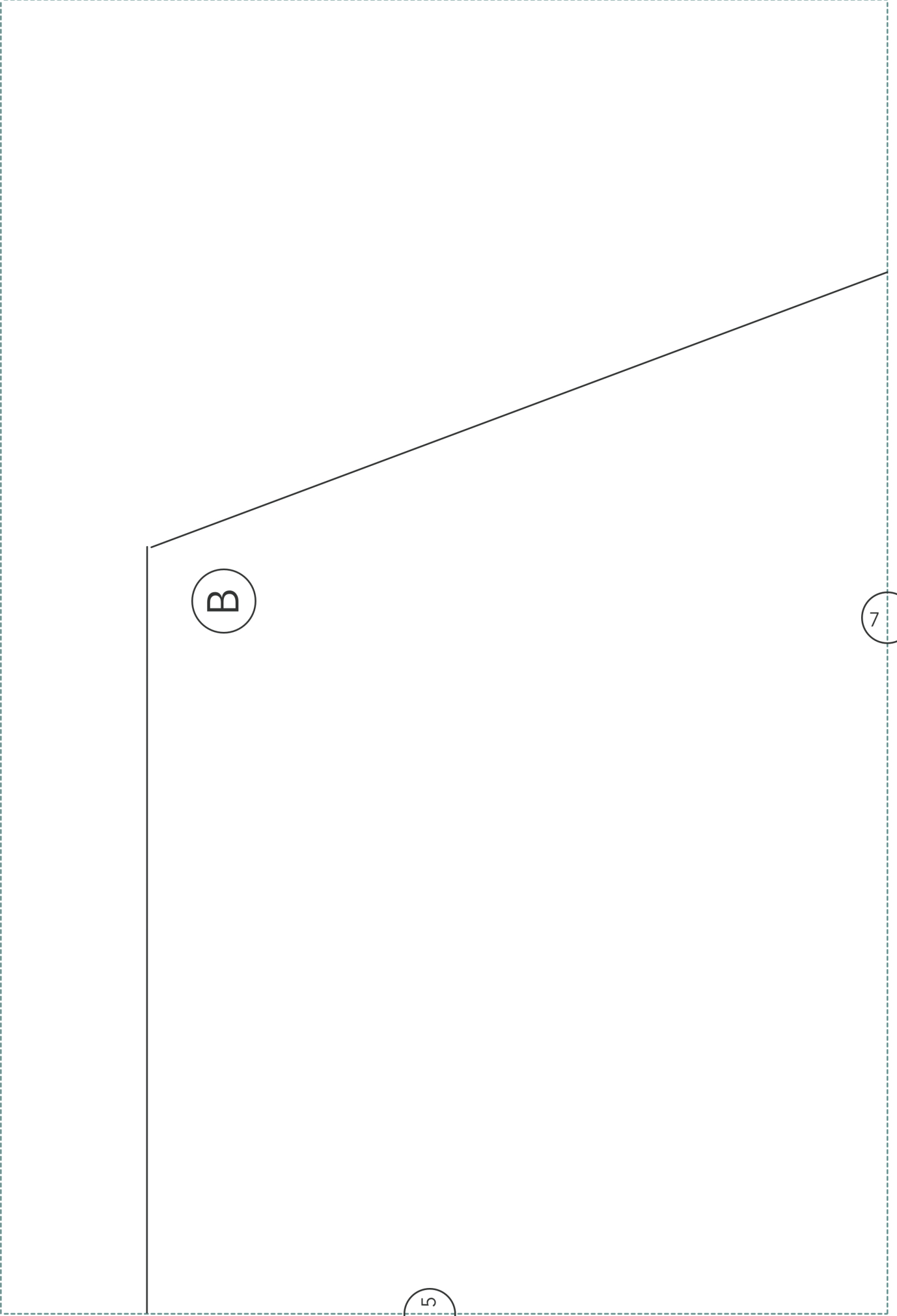


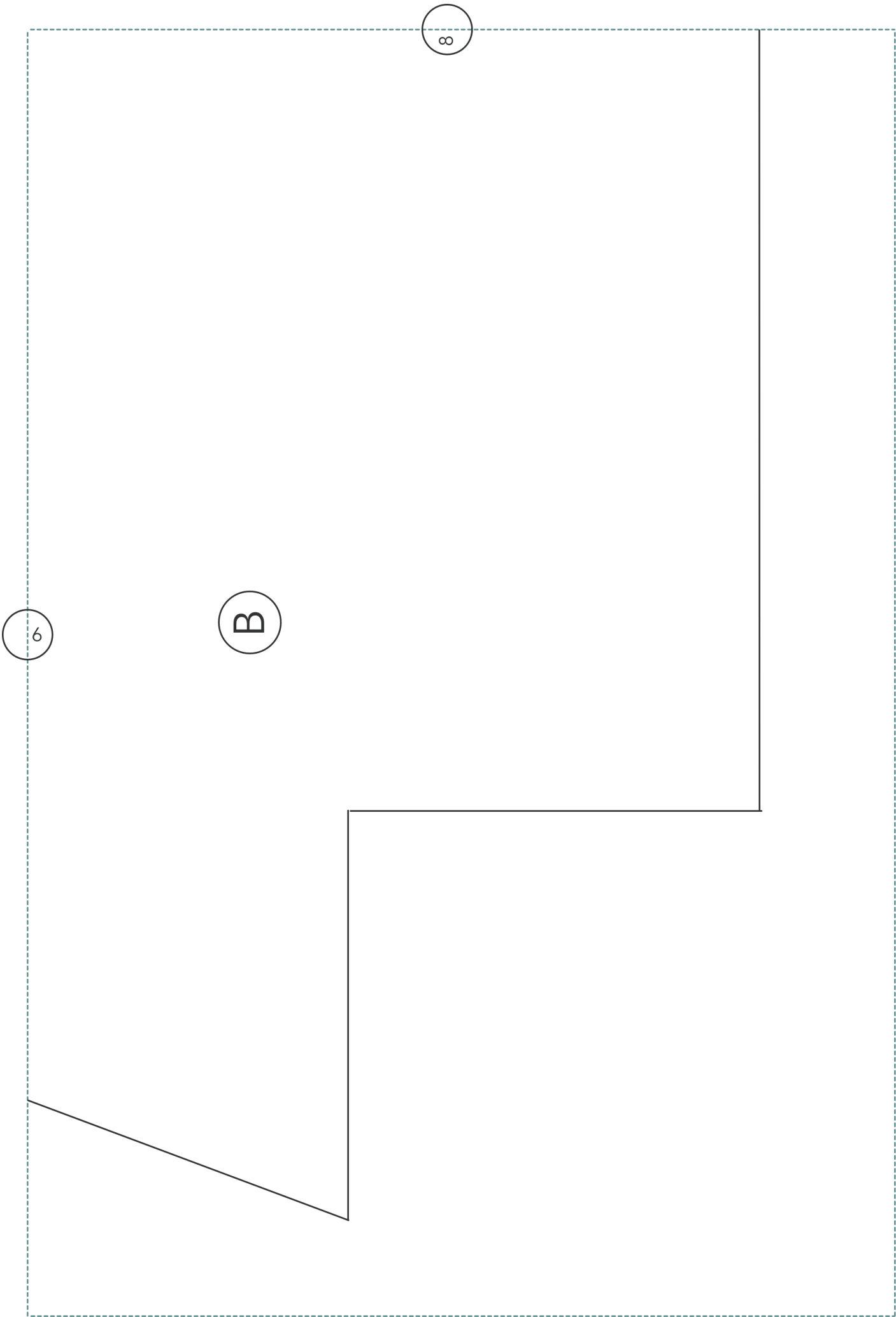
Origami Tasche – Futter

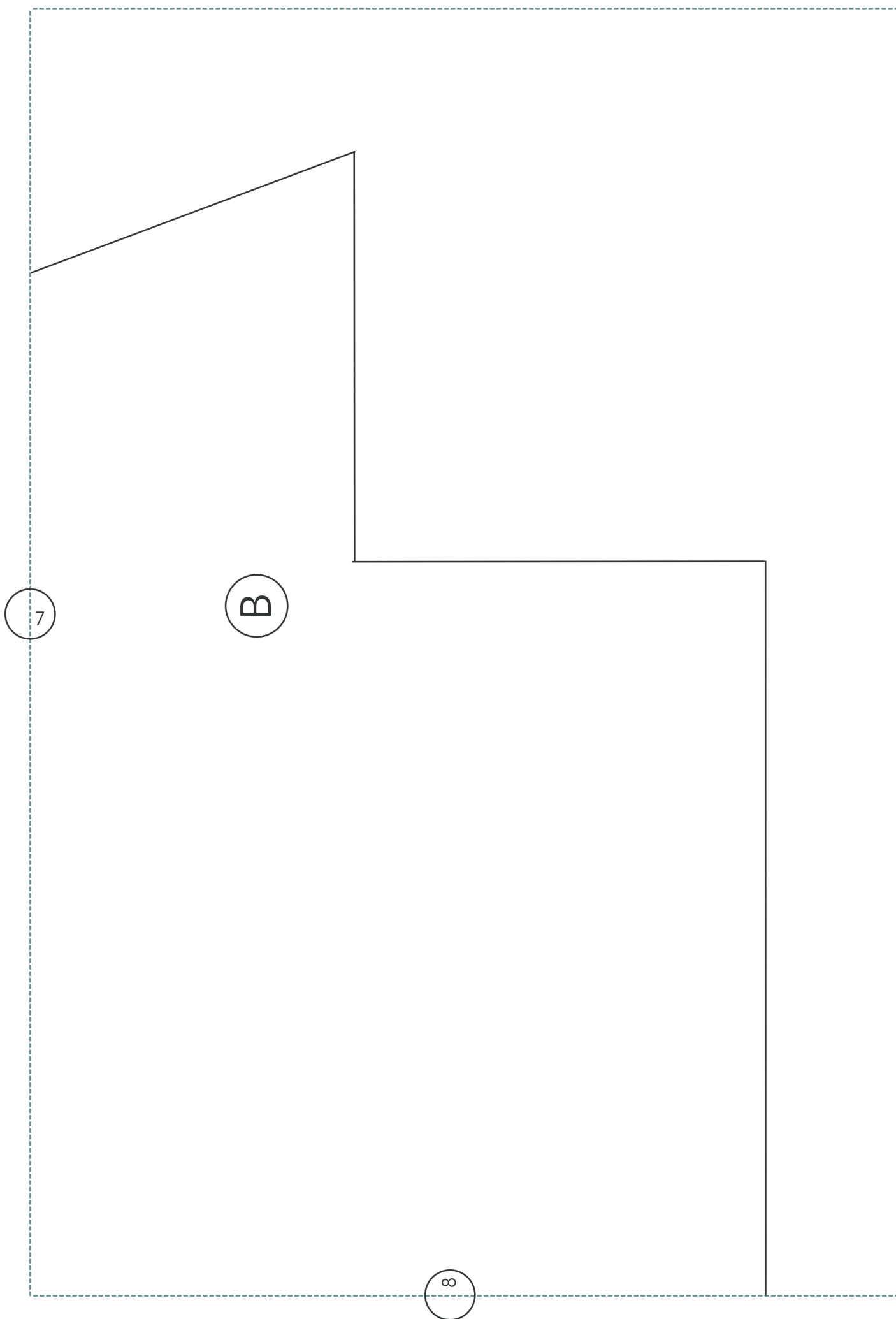
2 x Innenstoff
(inkl. Nahtzugabe)

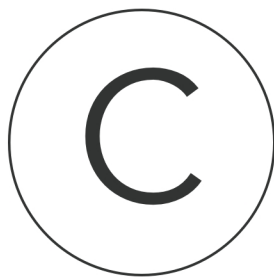
5

6









Origami Tasche – Klappe

1 x Kunstleder
1 x Innenstoff
(inkl. Nahtzugabe)

C

9