



**CREATIVE AWL**

# **ANDRÉ MESSENGER BAG**

**PREPARED BY:**

Patryk Ku,  
[www.CreativeAwl.com](http://www.CreativeAwl.com)



**PLEASE  
READ!**

If it wasn't for your support, this pattern wouldn't have come into being, thanks! If you already post pictures of your bag in the social media, I would be invariably glad if you would mention the author. I also encourage you to share your work on our facebook group.

All rights reserved. No pattern content may be shared or reproduced. If you would like to share pictures of your, please recommend our facebook group or <https://www.creativeawl.com>

You can sell items based on my patterns without any restriction.

Thank you and have fun!  
Patryk



# LET'S GO:

01

## PRINT THE PATTERN

- Open your pattern in Adobe Acrobat Reader. Set up options of your printer on A4 paper with 0 margins (if needed).
- Every page has a measure - check does it fit.
- Every printed page **MUST HAVE** a border around! If doesn't - move paper left/ right and print again and check the settings

02

## VIDEO TUTORIAL:

<https://youtu.be/kFZ24qniQZE>

Cutting patterns:

[https://youtu.be/2TNUI\\_Tlk64](https://youtu.be/2TNUI_Tlk64)

03

## GIVE A SMILE TO OTHER PEOPLE!

Give a ready product to you family or freind. Give them a smile :)))

Also Check [www.CreativeAwl.com](http://www.CreativeAwl.com) for more patterns

04

## JOIN OUR FB GROUP

Go there to share your work. Also get more DIY&ideas. We will support you & answer all questions.

<https://www.facebook.com/groups/CreativeAwlPatterns>

# YOU NEED

## TOOLS

- sharp knife
- 1-1,5 and 3mm hole puncher
- hammer
- 2 needles
- paper tape
- a home printer

## MATERIALS

- 4,3 sqft (0,4 sqm) of leather (preferable 4-6 oz (1,5-2,5mm))
- Waxed thread (preferable 0,8-1 mm)
  - 2 zippers
  - 2x25mm d-rings



## SHARE YOUR WORK

<https://www.facebook.com/groups/CreativeAwlPatterns>

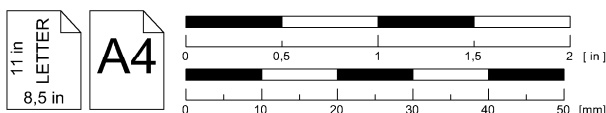
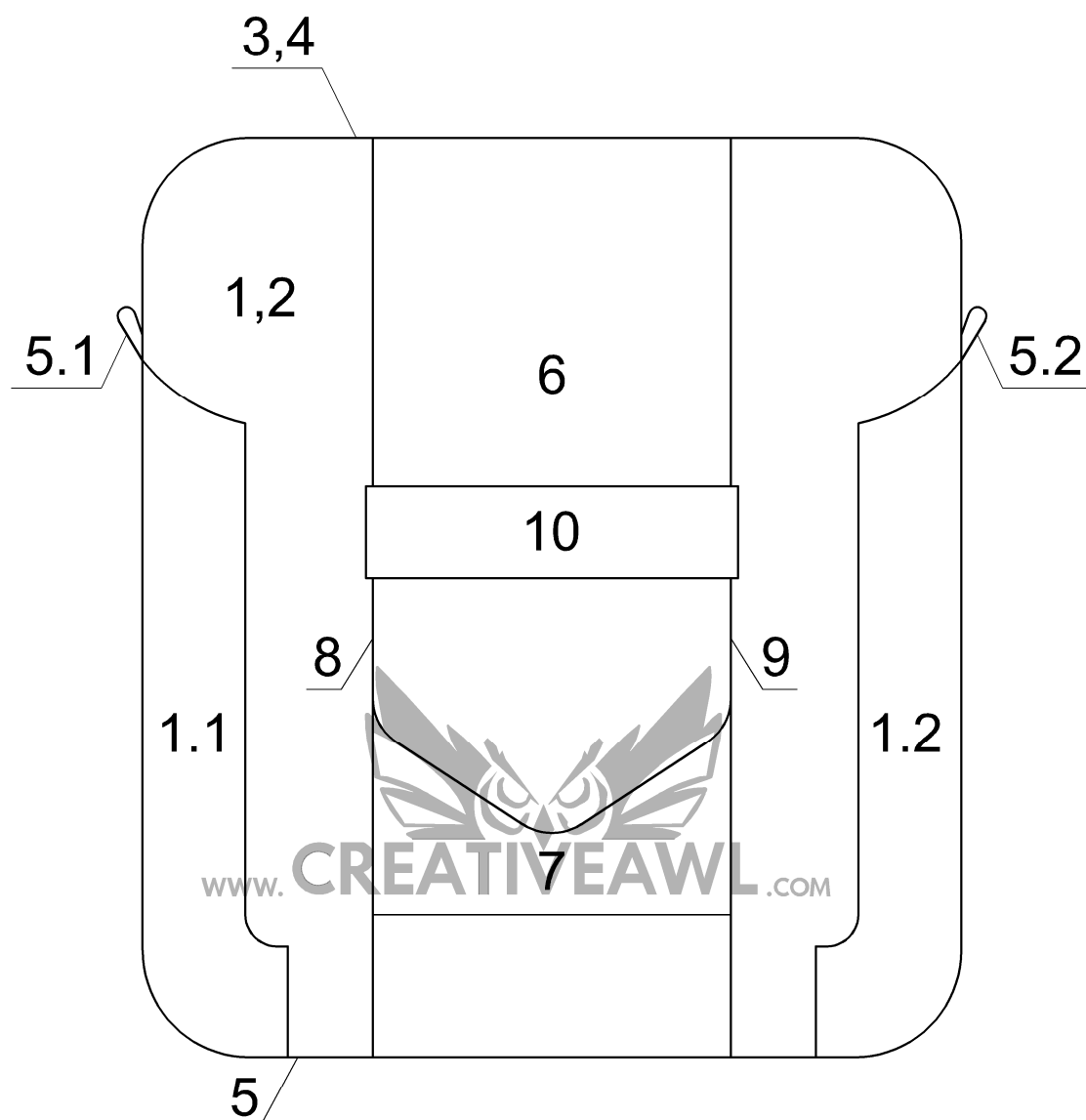
If you got ANY problem,- don't be shy to ask directly on Etsy or facebook

# André bag:

pages 5 - 18

-The number in the circle shows which holes are to be connected. Example: ①

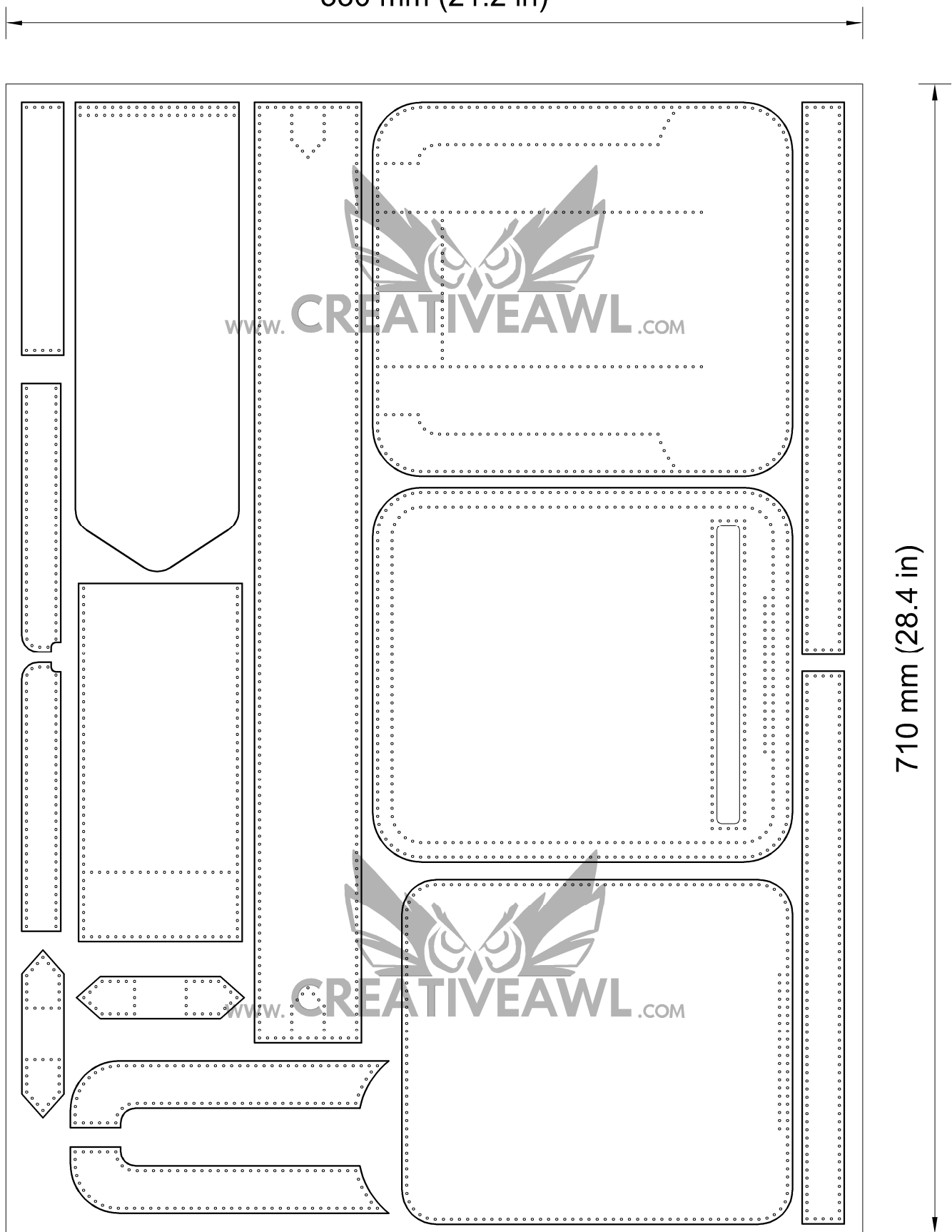
-Numbers 1, 2, 3 (...) without a circle indicate where the piece lies in the overview drawing.



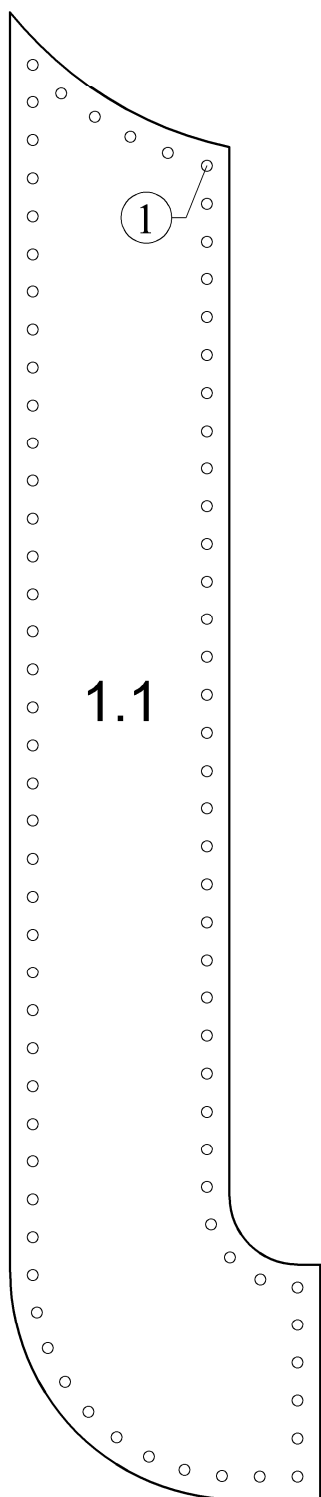
Sketch drawing

Leather needed for a André bag: about 0,40 m2

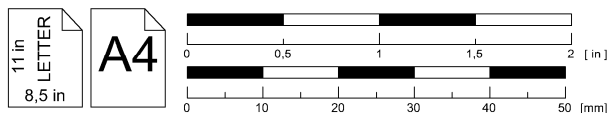
530 mm (21.2 in)



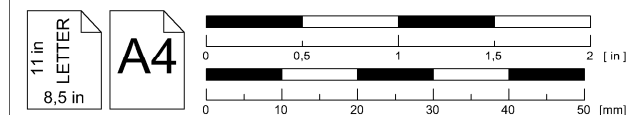
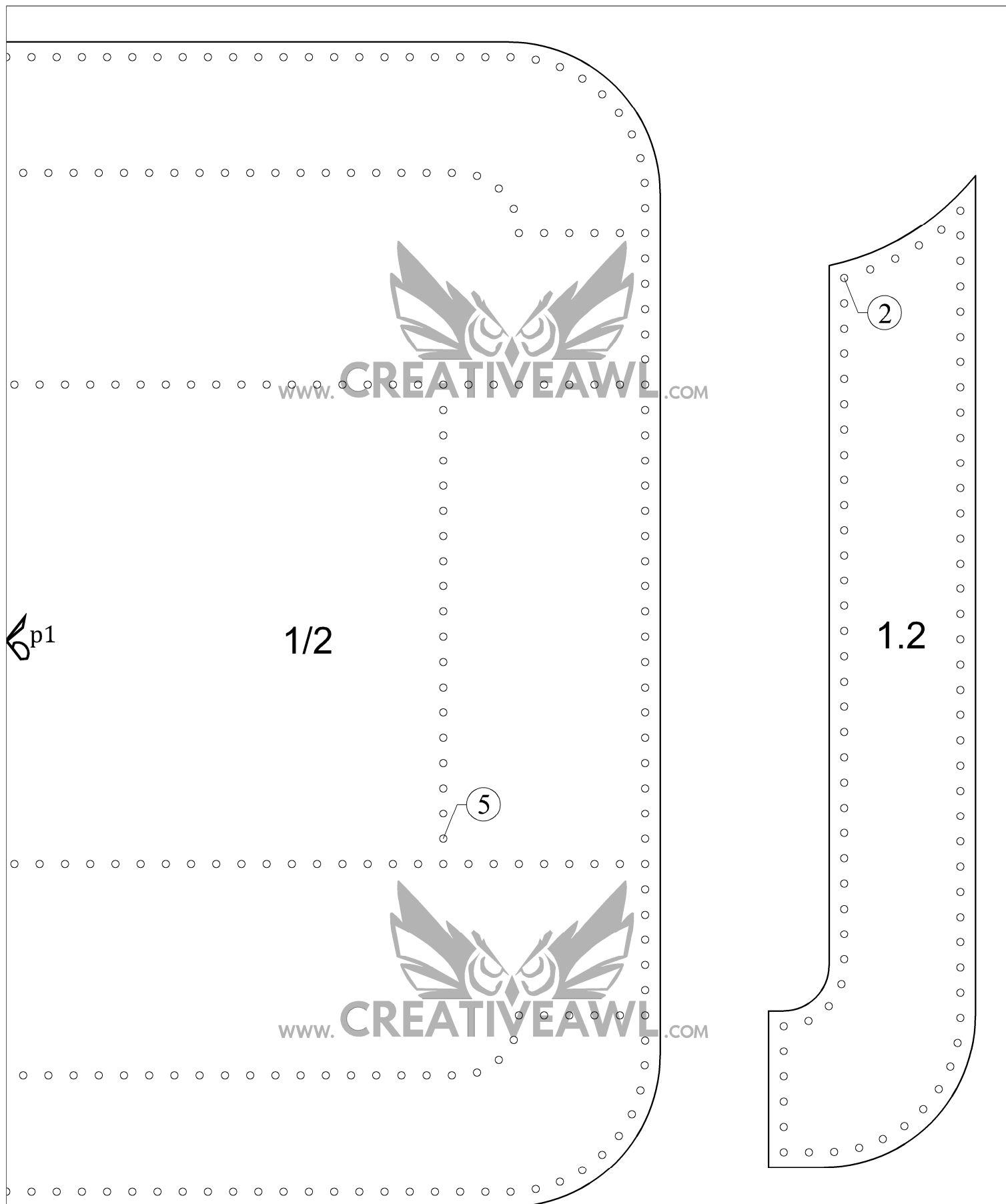
Sketch drawing  
Bill of materials



p1 



André bag: front and  
front components



André bag: front and  
front components



www.CREATIVEAWL.COM

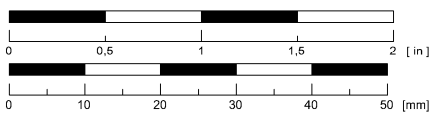
www.CREATIVEAWL.COM

2/1

p2

11 in  
LETTER  
8,5 in

A4



André bag: back

9

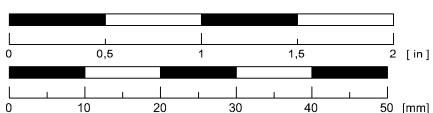


2/2



11 in  
LETTER  
8,5 in

A4



André bag: back



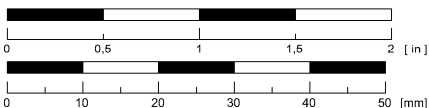
2.1/1

p3 



11 in  
LETTER  
8,5 in

A4



André bag: back  
pocket

1 1

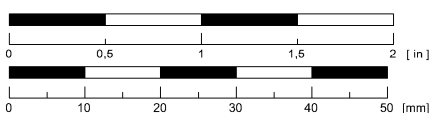


6p3

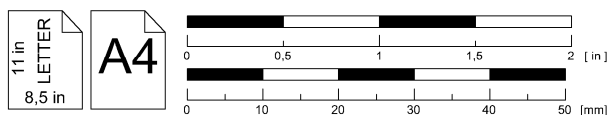
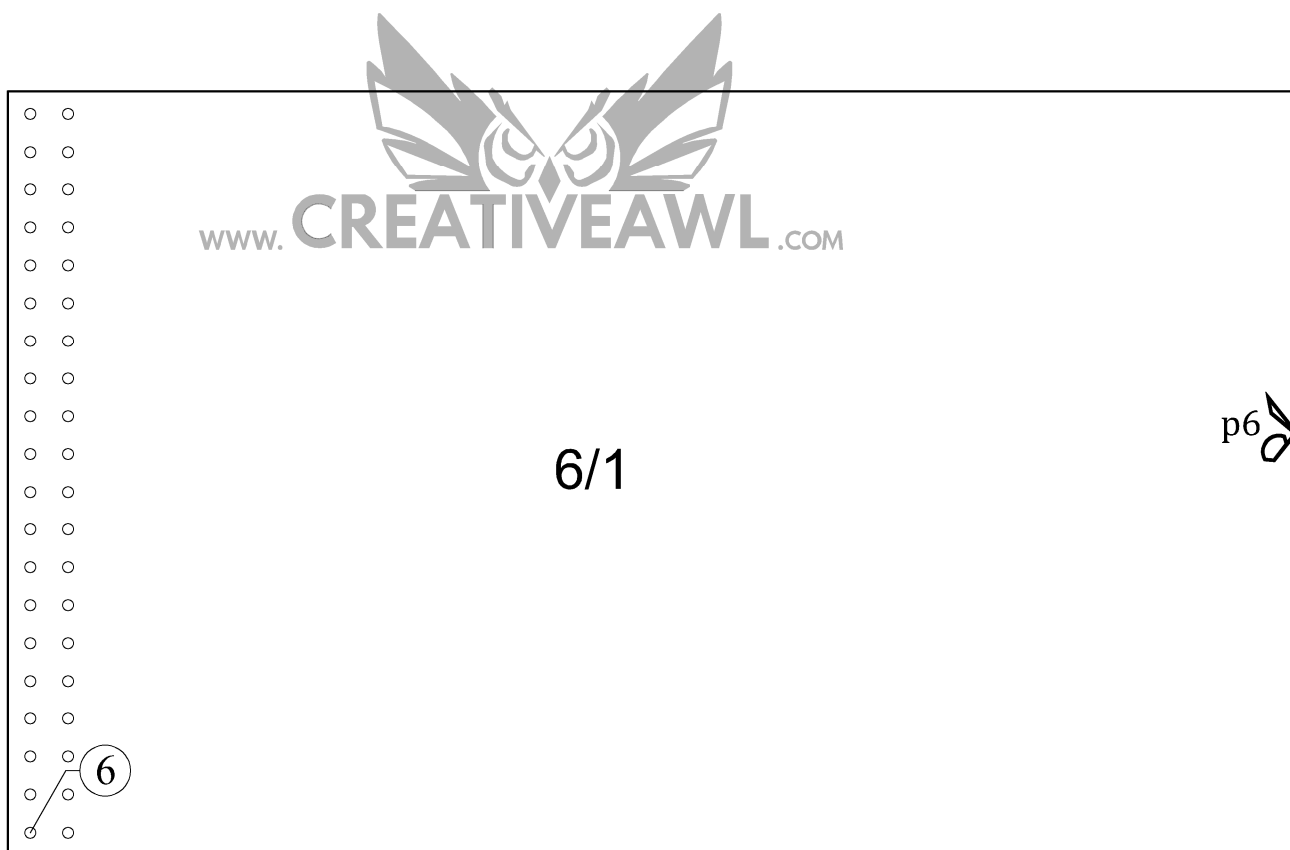
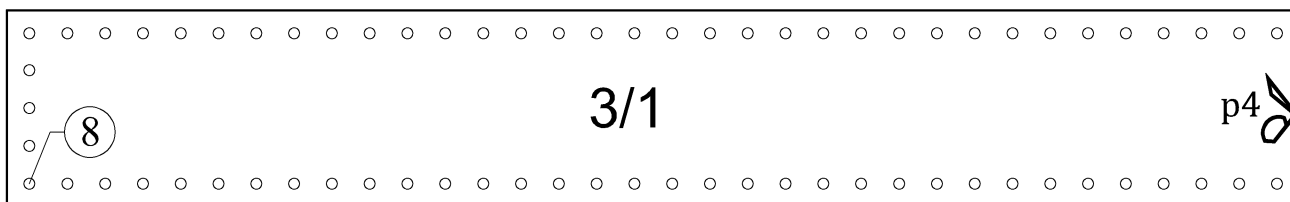
2.1/2

11 in  
LETTER  
8,5 in

A4

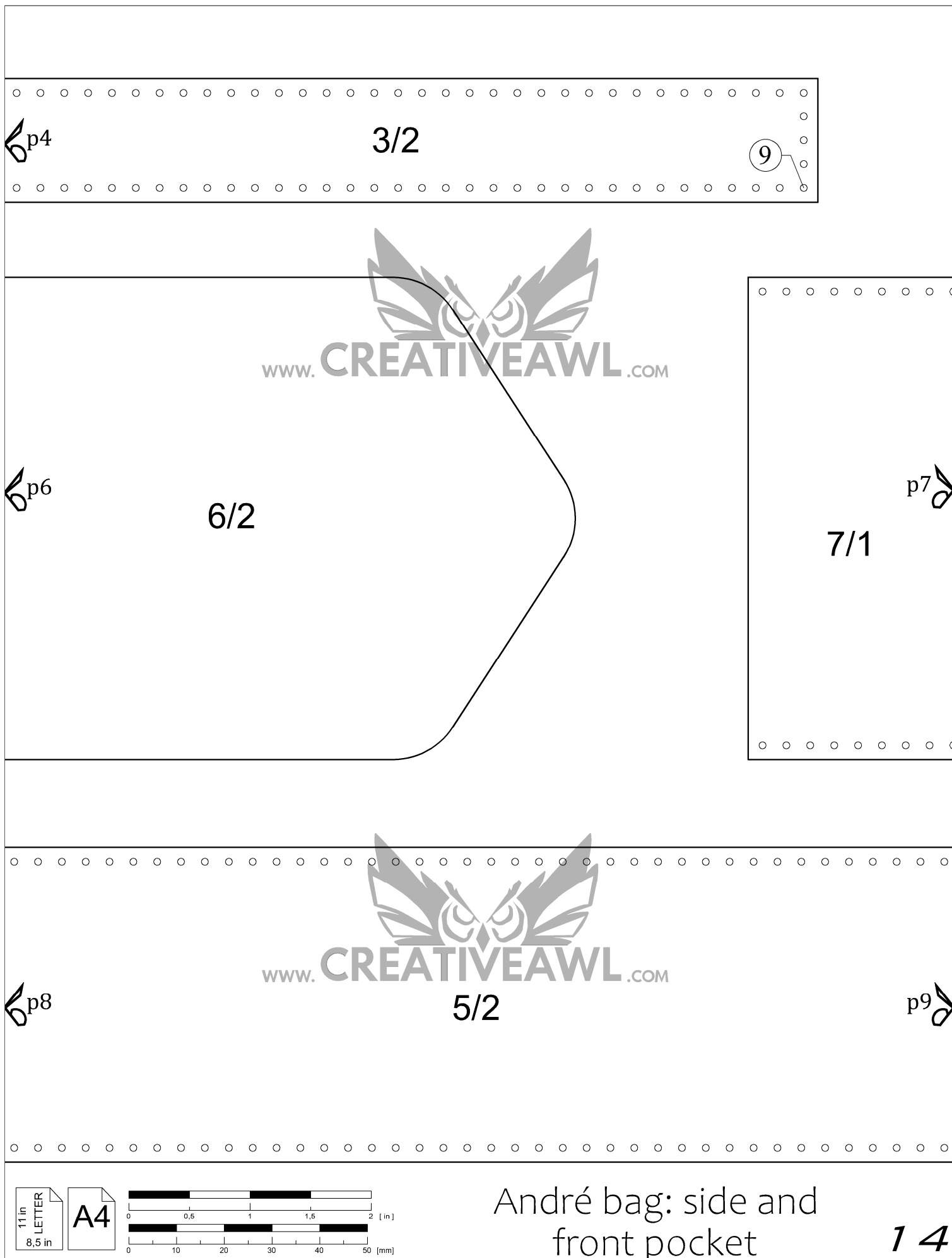


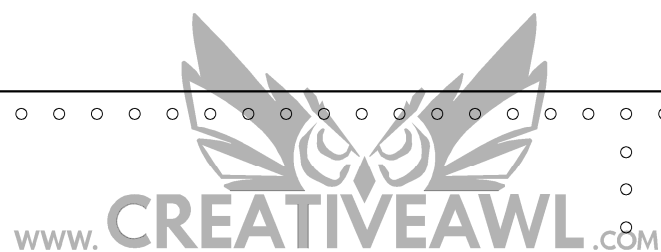
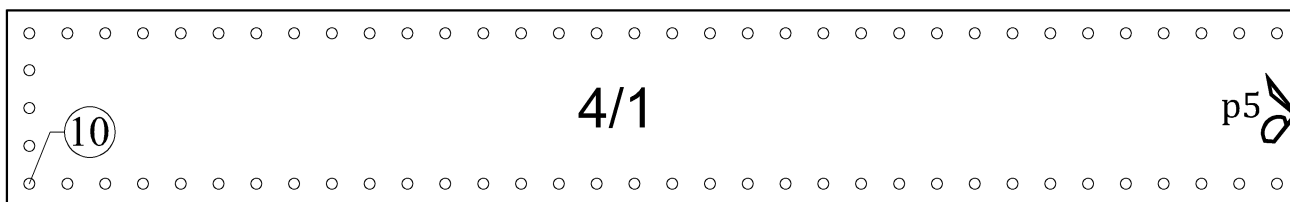
André bag: back  
pocket



André bag: side and  
front pocket



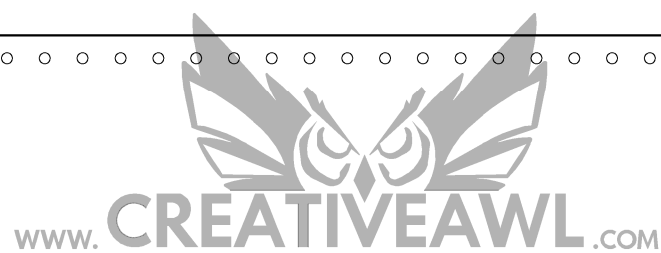




p7

7/2

5



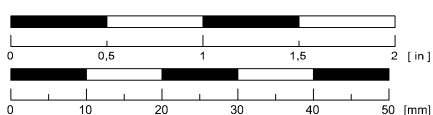
p9

5/3

13

9

10

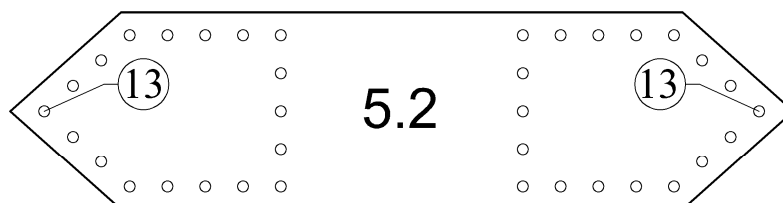
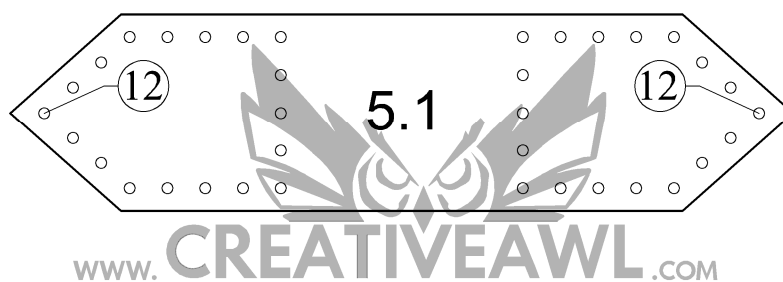
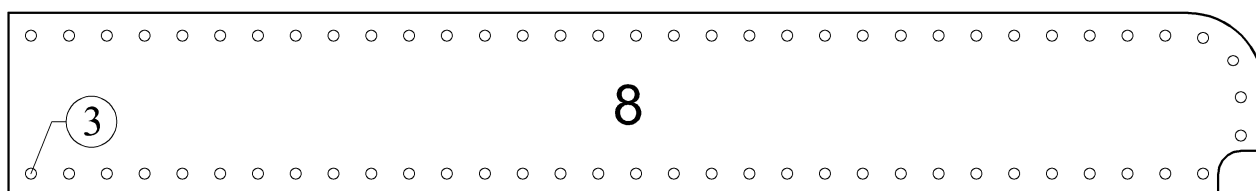
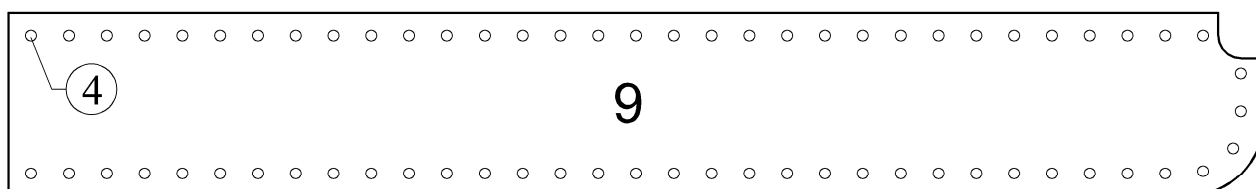


André bag: side and front pocket

p5

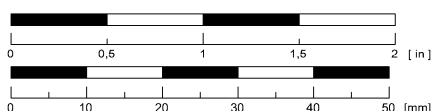
4/2

11

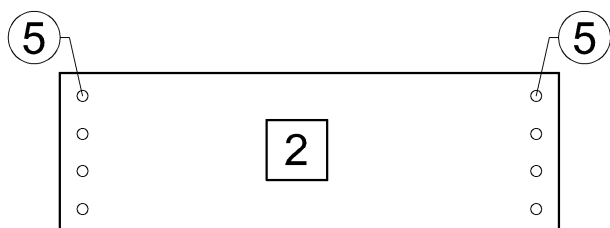
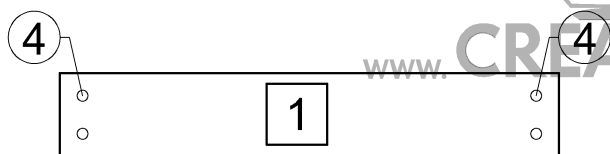


11 in  
LETTER  
8,5 in

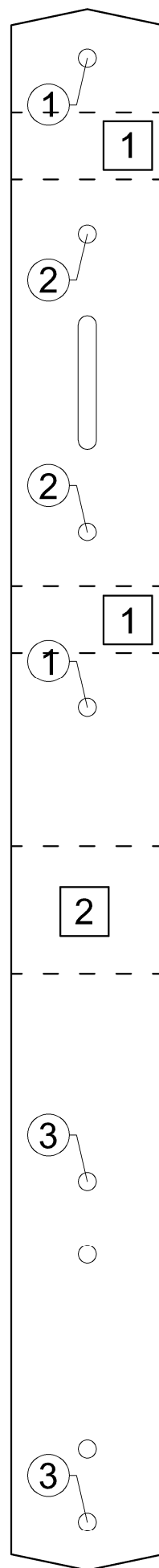
A4



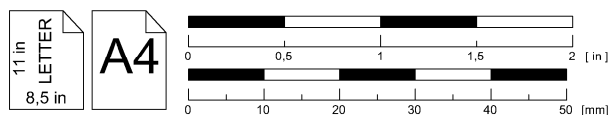
André bag: side and  
front pocket

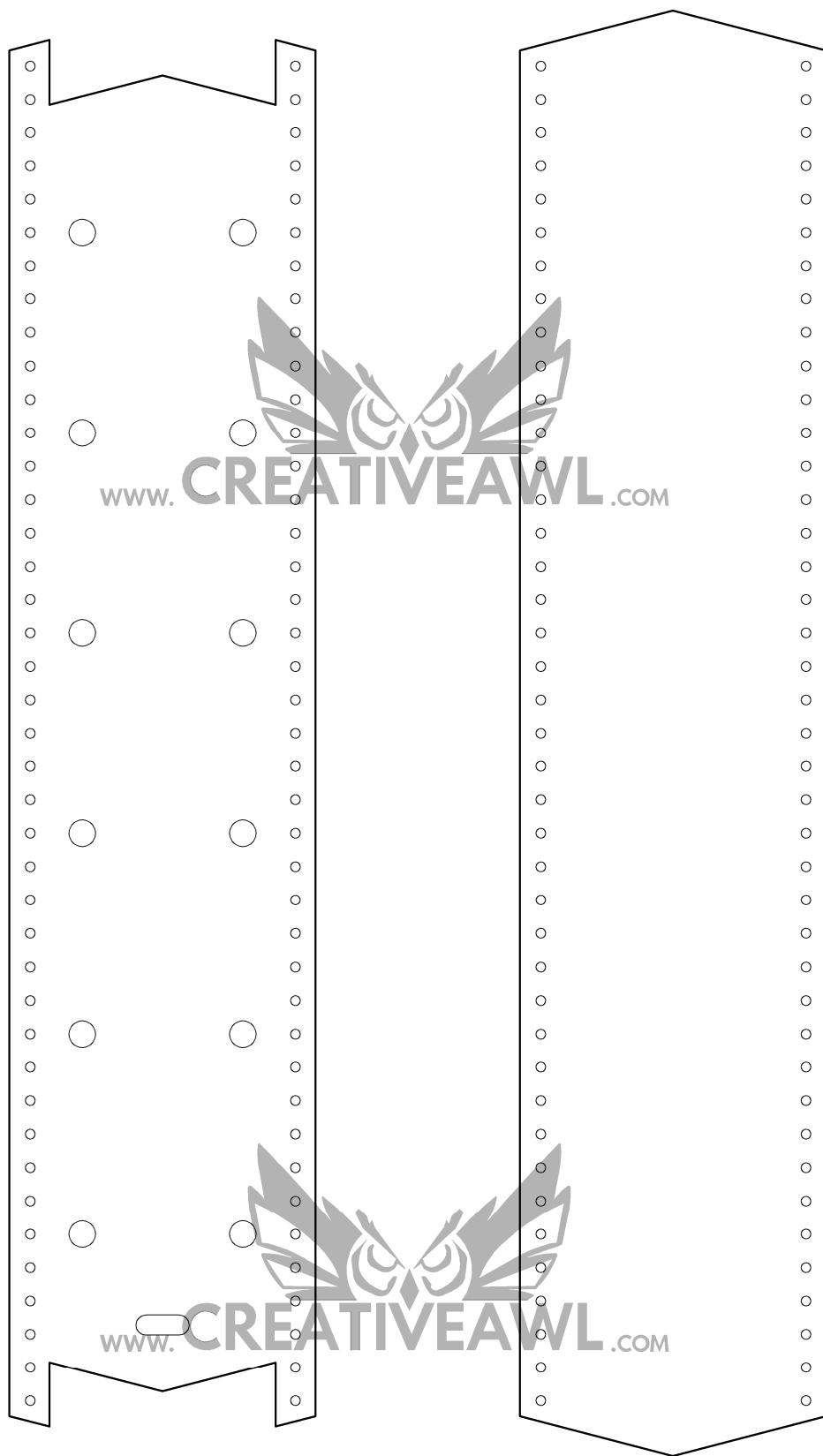


about 110 - 130 cm (44 - 52 in)



André bag  
shoulder strap  
"25 mm"





André bag  
shoulder strap  
"25 mm"

