





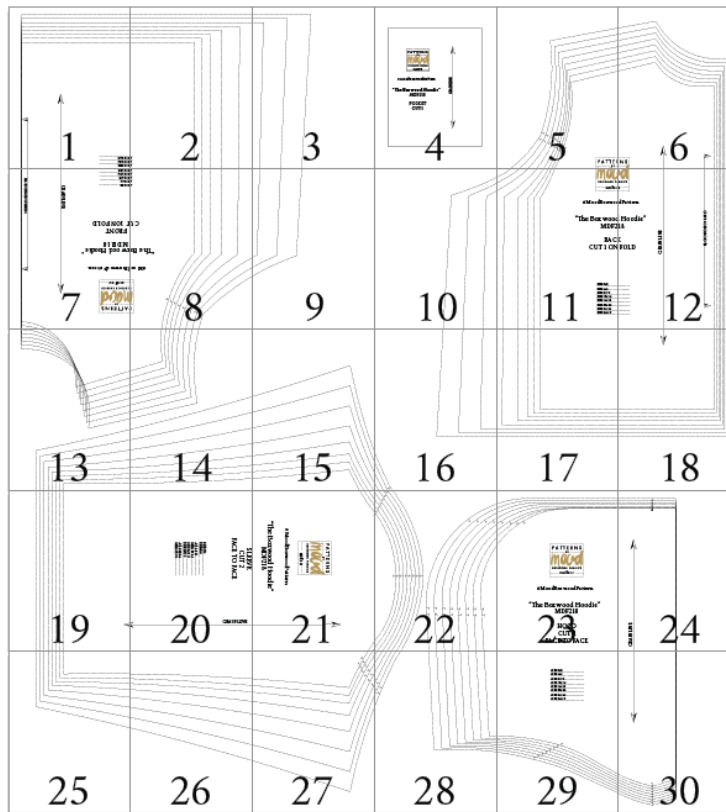
# “The Boxwood Hoodie”

Sizes 0/2 to 28/30

Stop!

Print just this page first to check accuracy.  
The Mood square to the left should measure  
2 inches. Print “actual size” (no scaling).

#MoodBoxwoodPattern

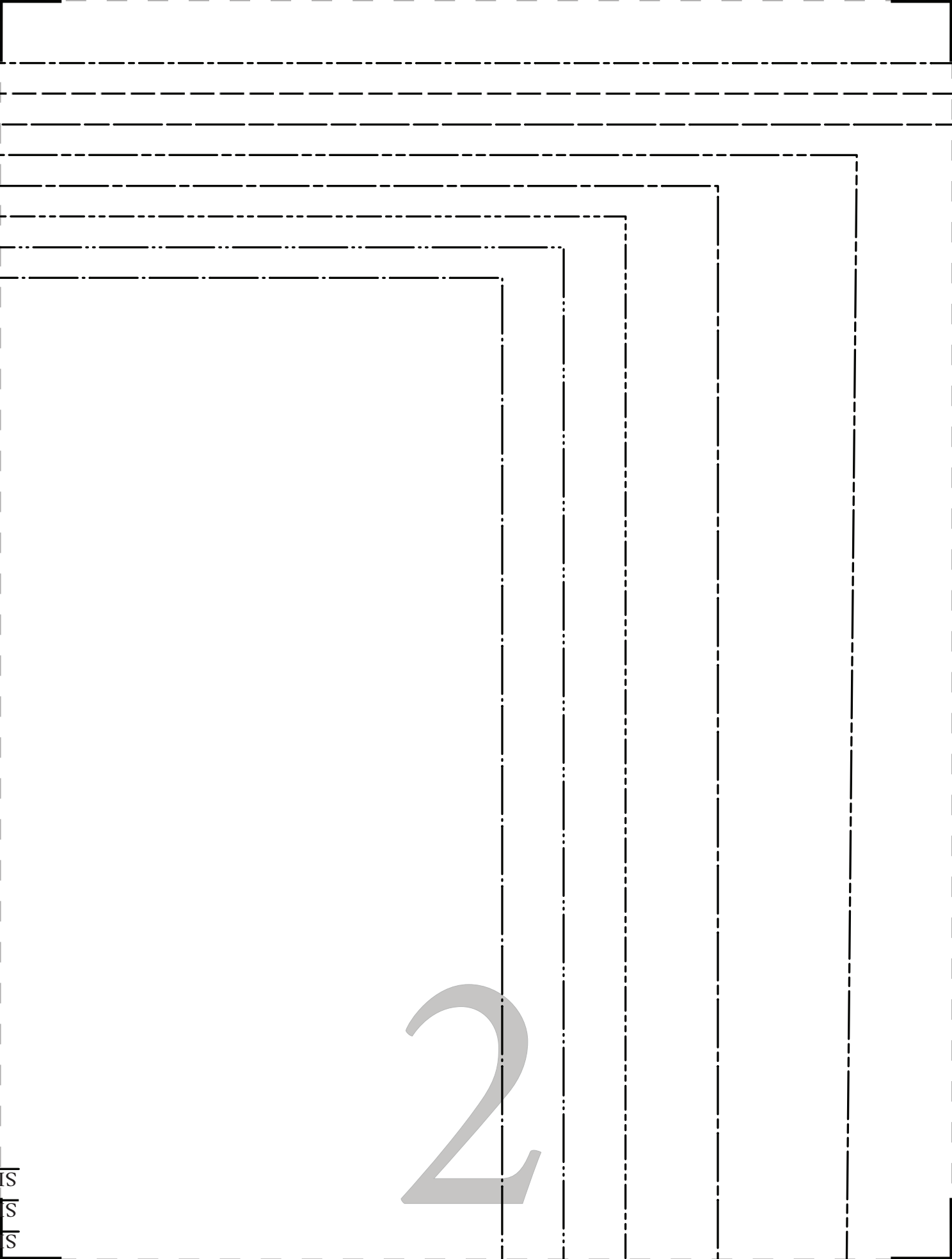


Выкройка идет с припусками на швы!

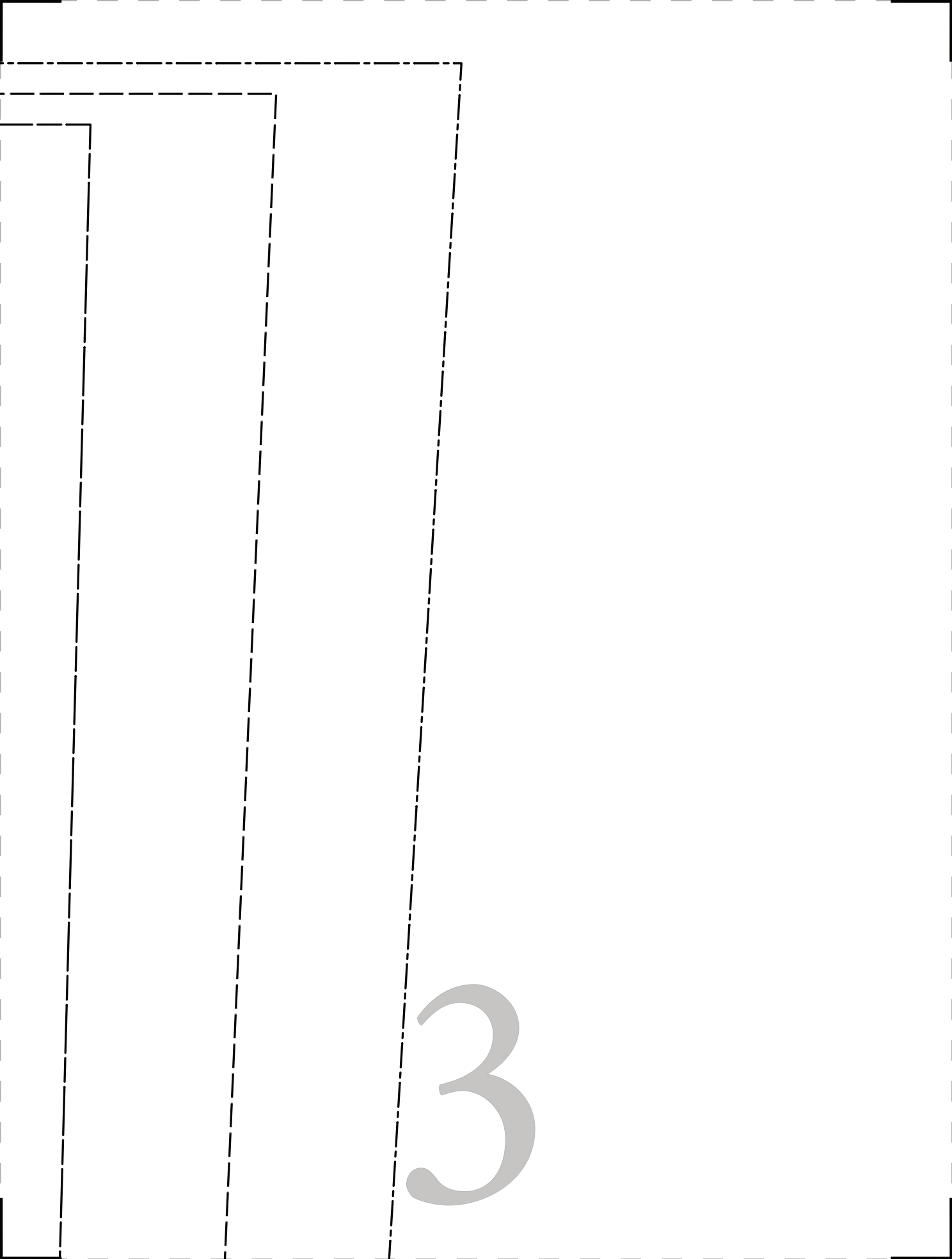
Все припуски на швы составляют 1/2 дюйма (12,7мм), если не указано иное. Технические характеристики размеров смотрите таблице.

1





2



3

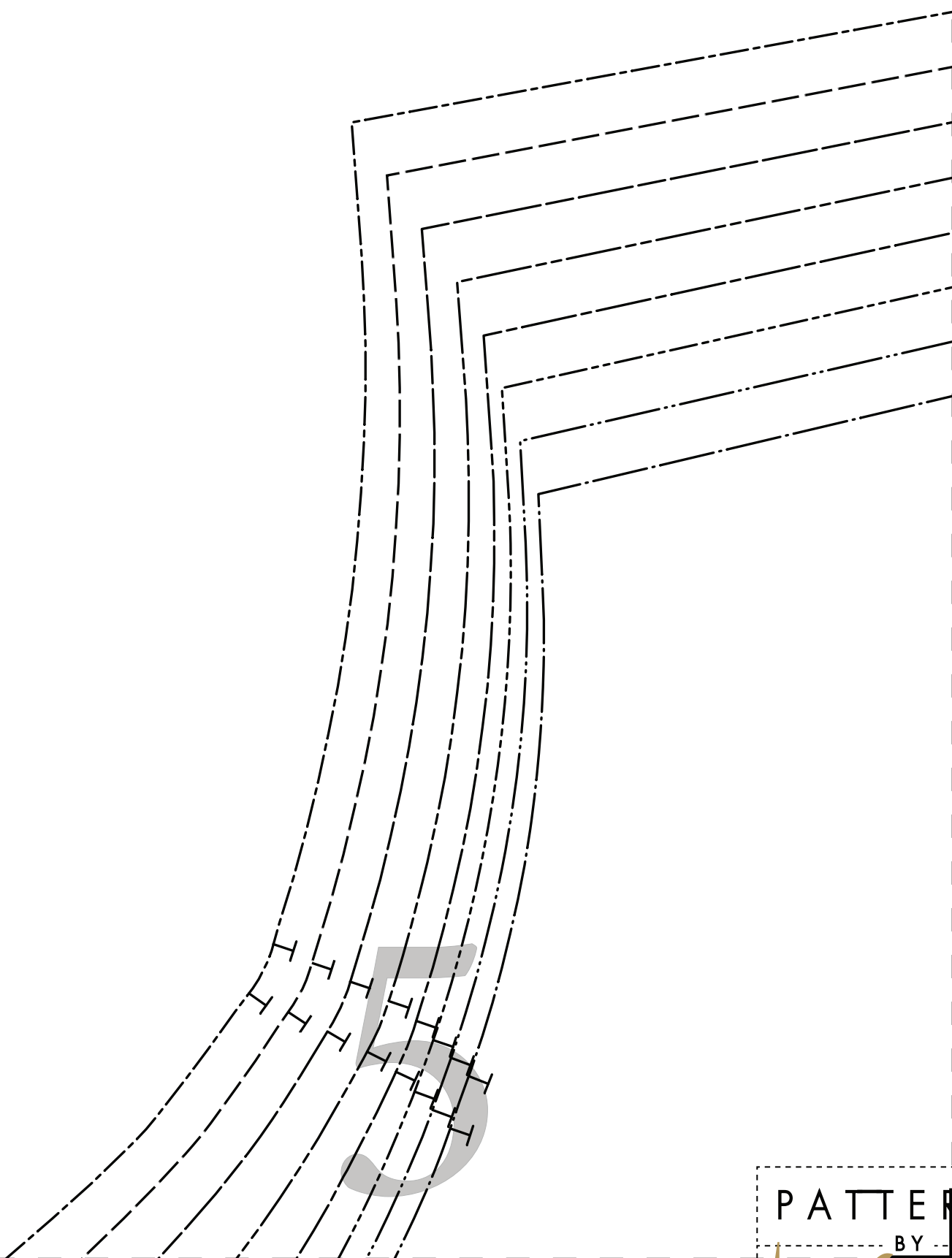


#MoodBoxwoodPattern

“The Boxwood Hoodie”  
MDF218

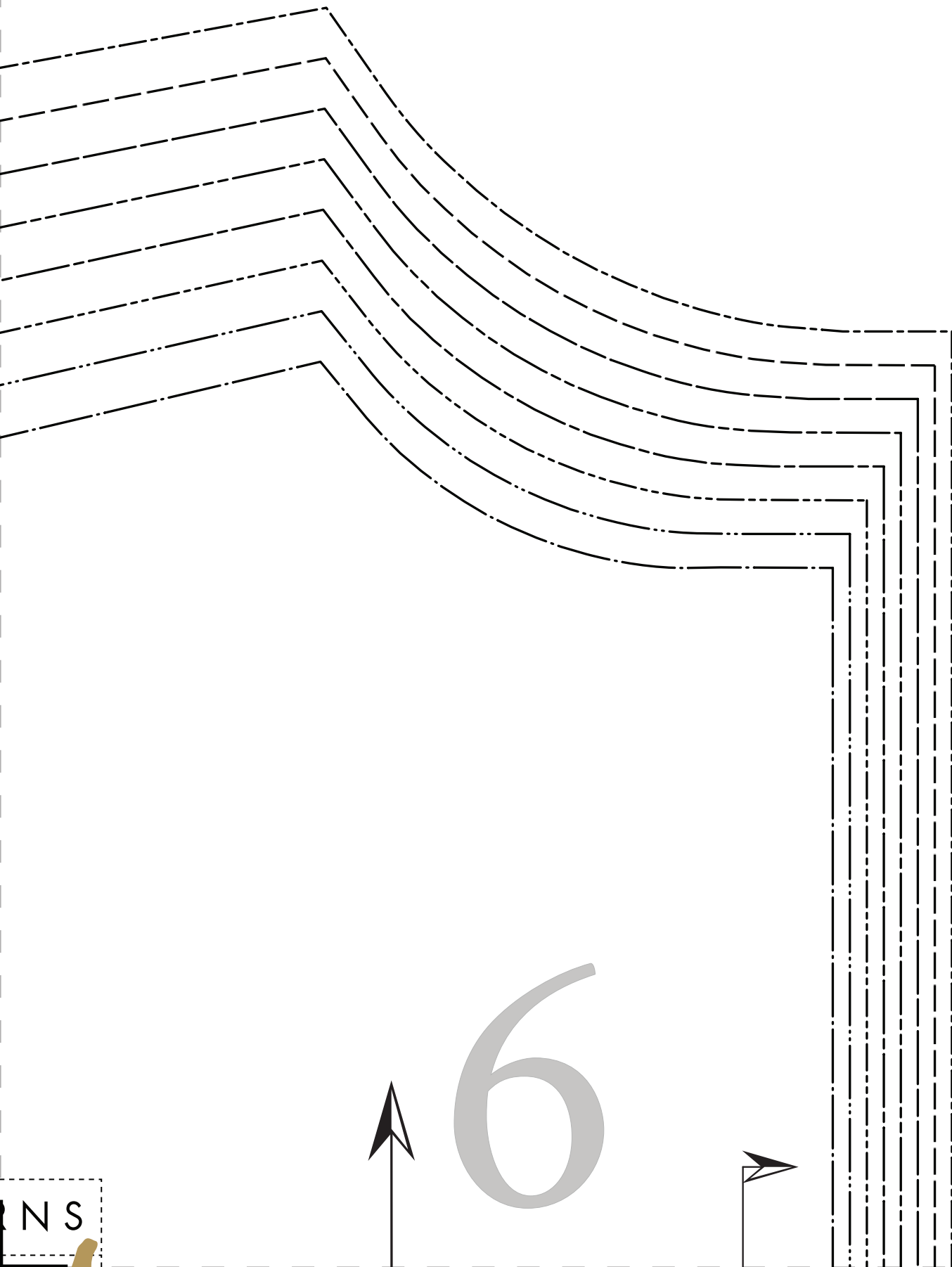
POCKET  
CUT 1





5

PATTERN  
BY --



NS



ZE 0/2  
ZE 4/6  
ZE 8/10  
ZE 12/14  
ZE 16/18

FRONT  
T 1 ON FOLD

Boxwood Hoodie”  
MDF218

BoxwoodPattern

PATTERNS  
BY  
Boxwood  
DESIGNER FABRICS  
MDF218

GRAINLINE

PLACE ON FOLD OF FABRIC



CU

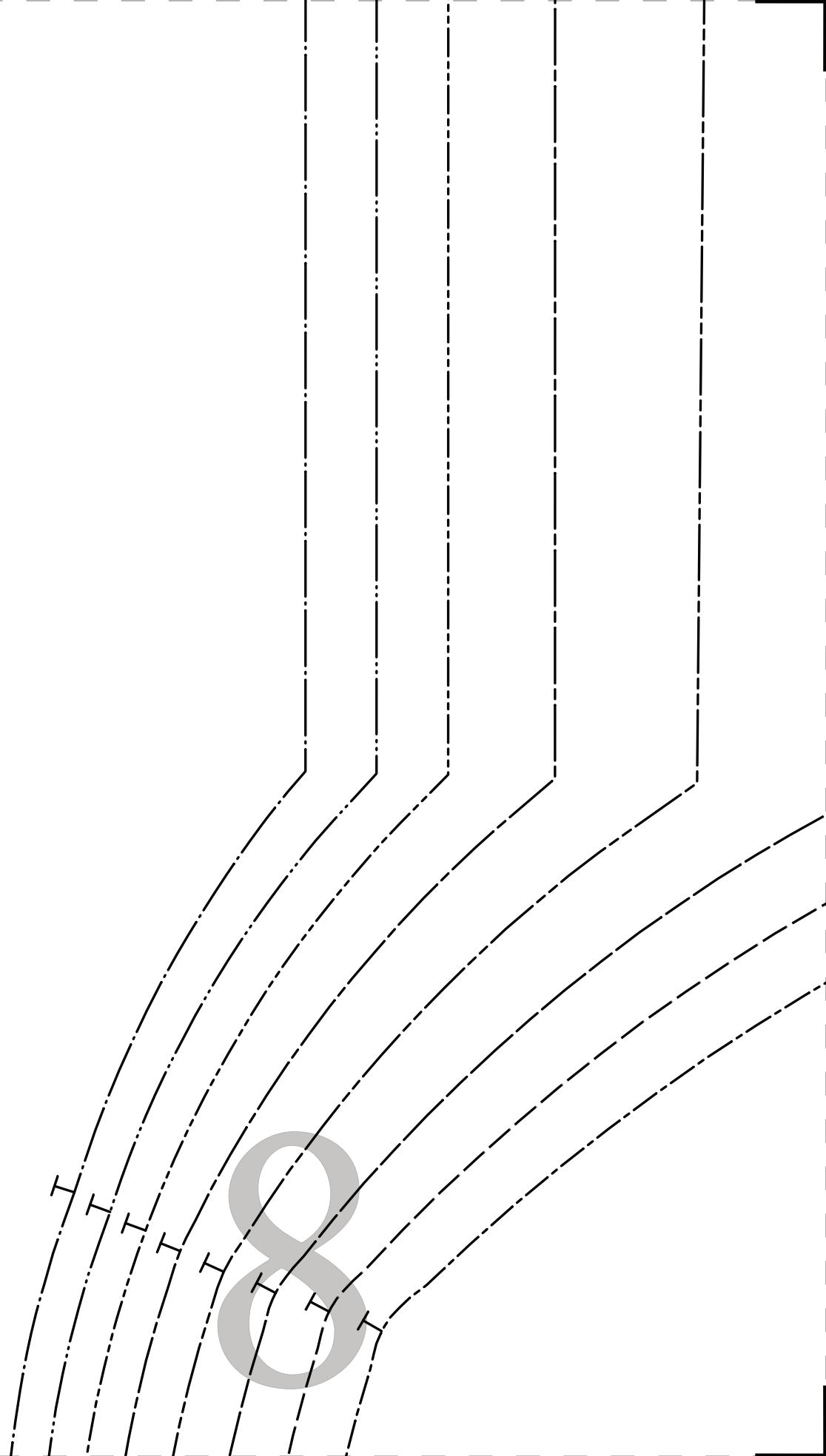
“The Bo

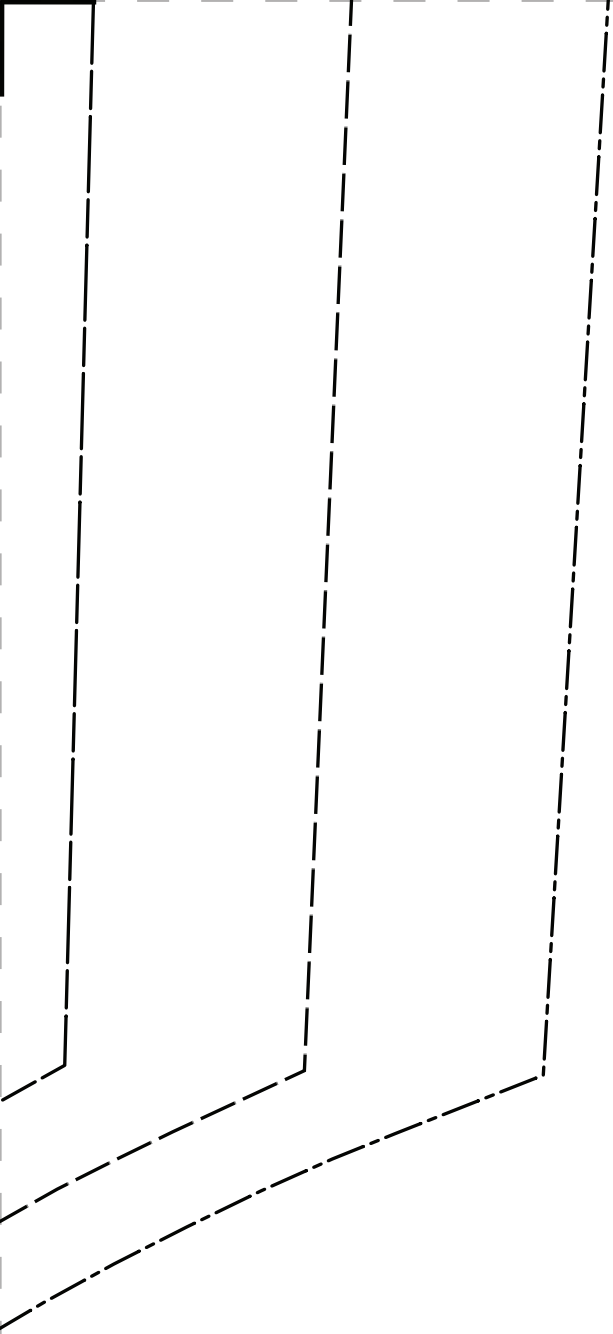
#Mood

d



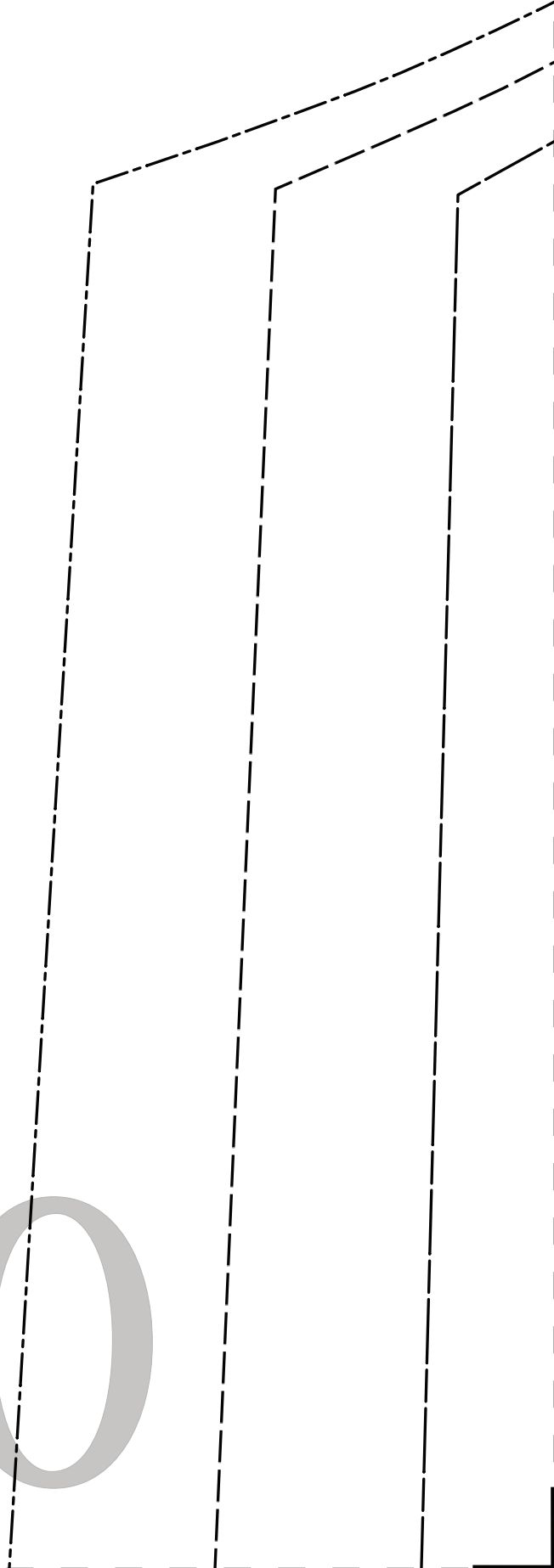
F





9

10



#MoodBoxwood

“The Boxwood  
MDF2

BAC  
CUT 1 ON

1 1

SIZE 0/2 .....

SIZE 4/6 .....

SIZE 8/10 .....

SIZE 12/14 .....

SIZE 16/18 .....

SIZE 20/22 .....

SIZE 24/26 .....

SIZE 28/30 .....



Pattern

Hoodie”  
18

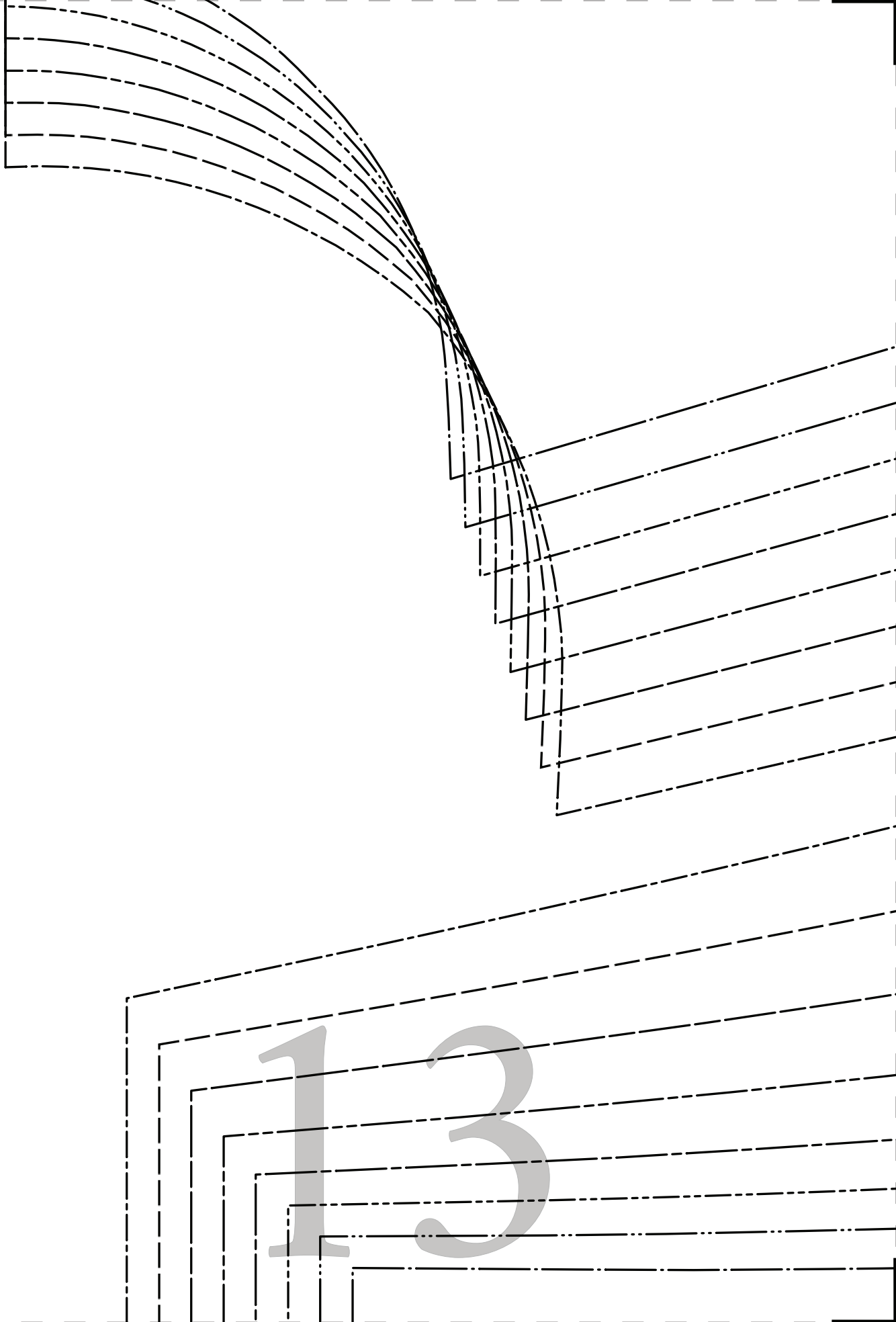
K  
FOLD

GRAINLINE

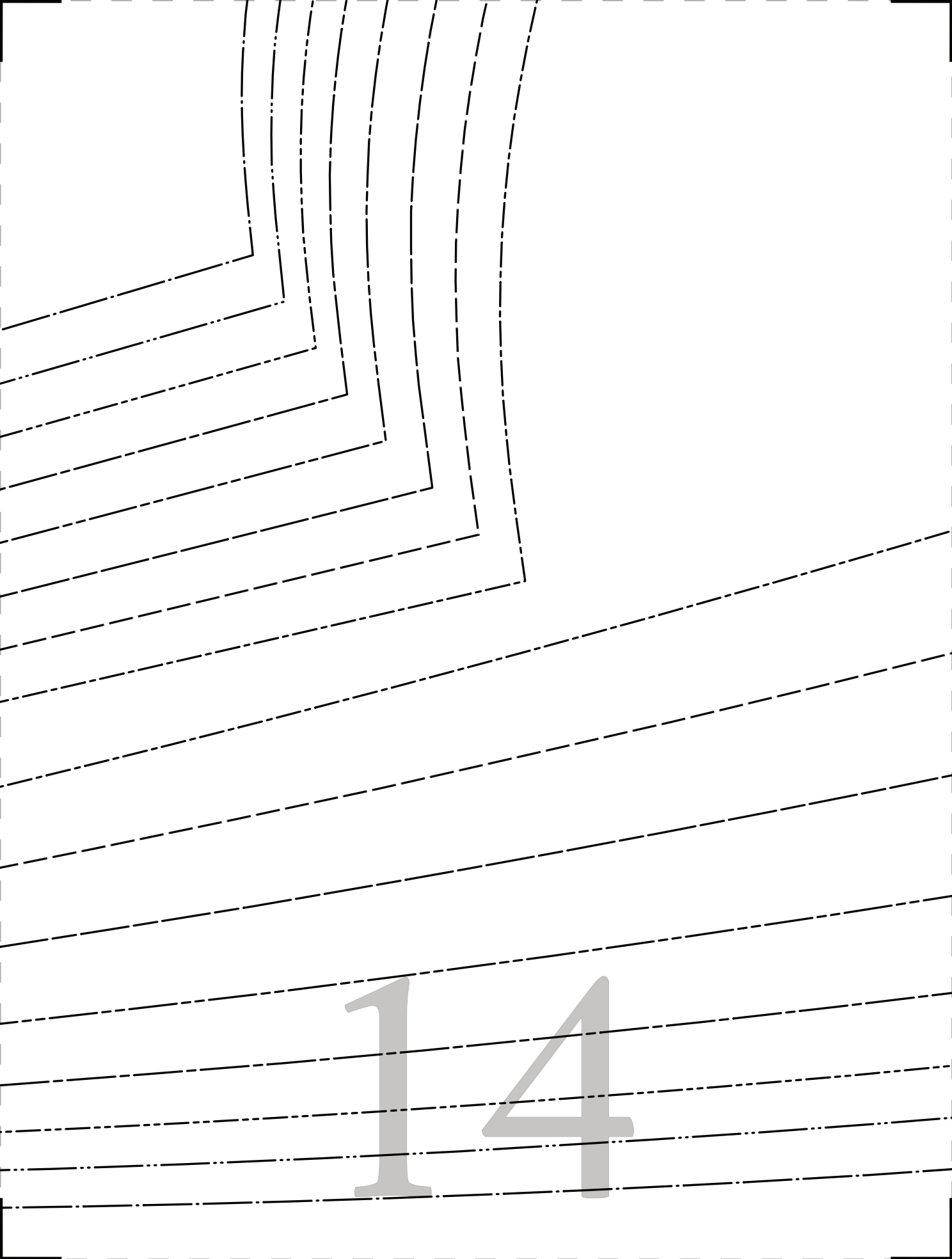
12

PLACE ON FOLD OF FABRIC





13



14



15

16

17



18

19

# SLEEVE

## CUT 2

FACE TO FACE

- SIZE 0/2.....
- SIZE 4/6.....
- SIZE 8/10.....
- SIZE 12/14.....
- SIZE 16/18.....
- SIZE 20/22.....
- SIZE 24/26.....
- SIZE 28/30.....

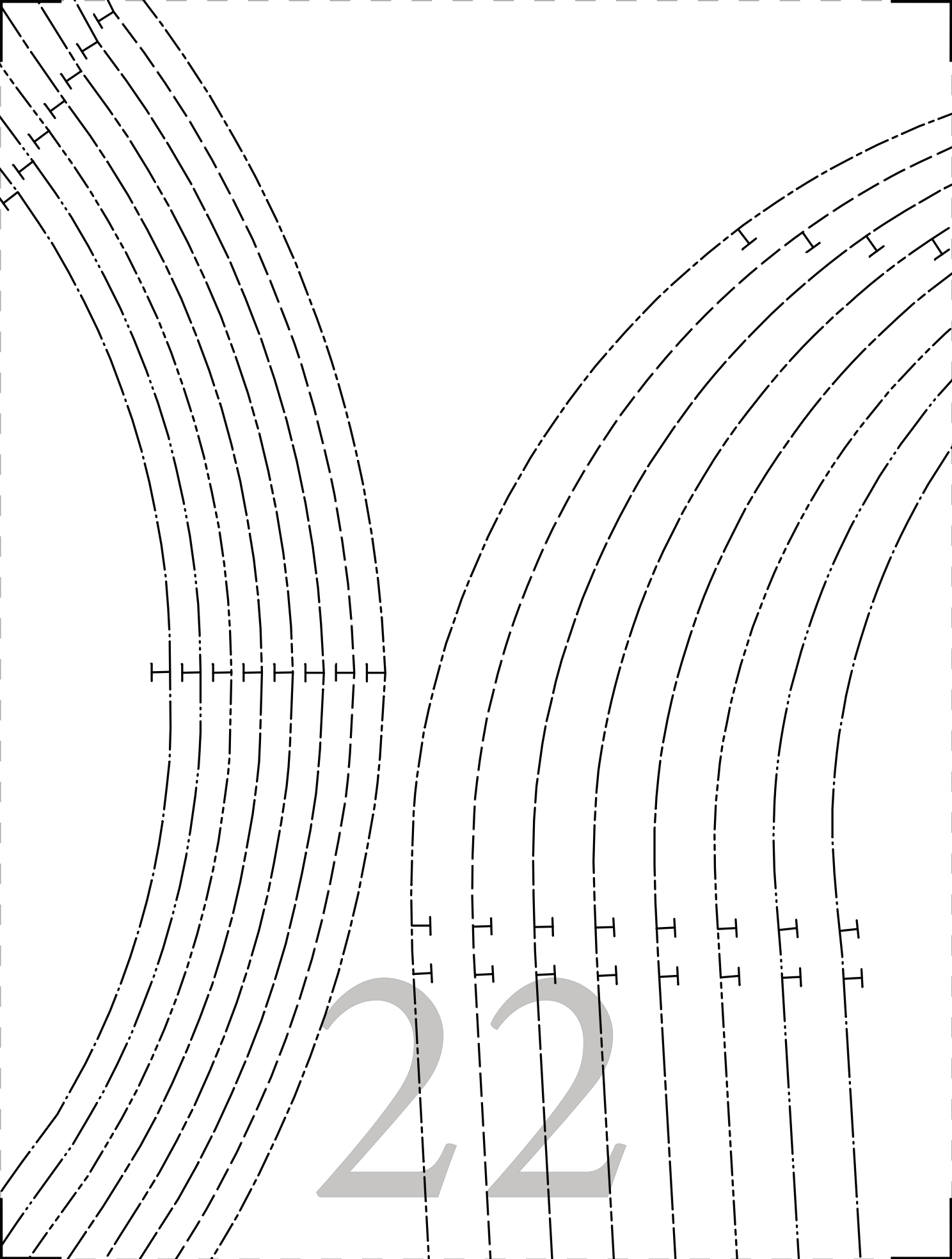
GRAINLINE



#MoodBoxwoodPattern

“The Boxwood Hoodie”  
MDF218

21







#MoodBoxwoodPattern

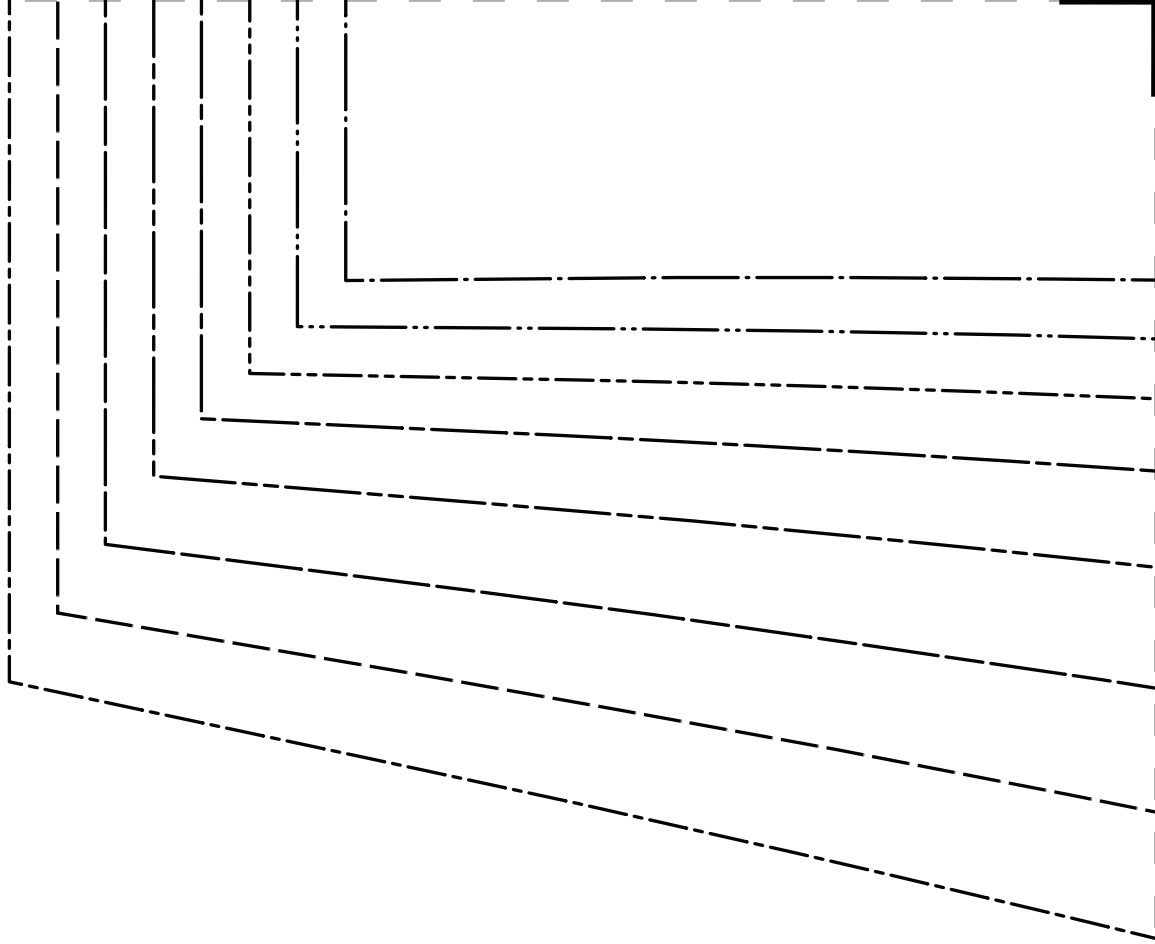
“The Boxwood Hoodie”  
MDF218

23  
HOOD  
CUT 2  
FACE TO FACE

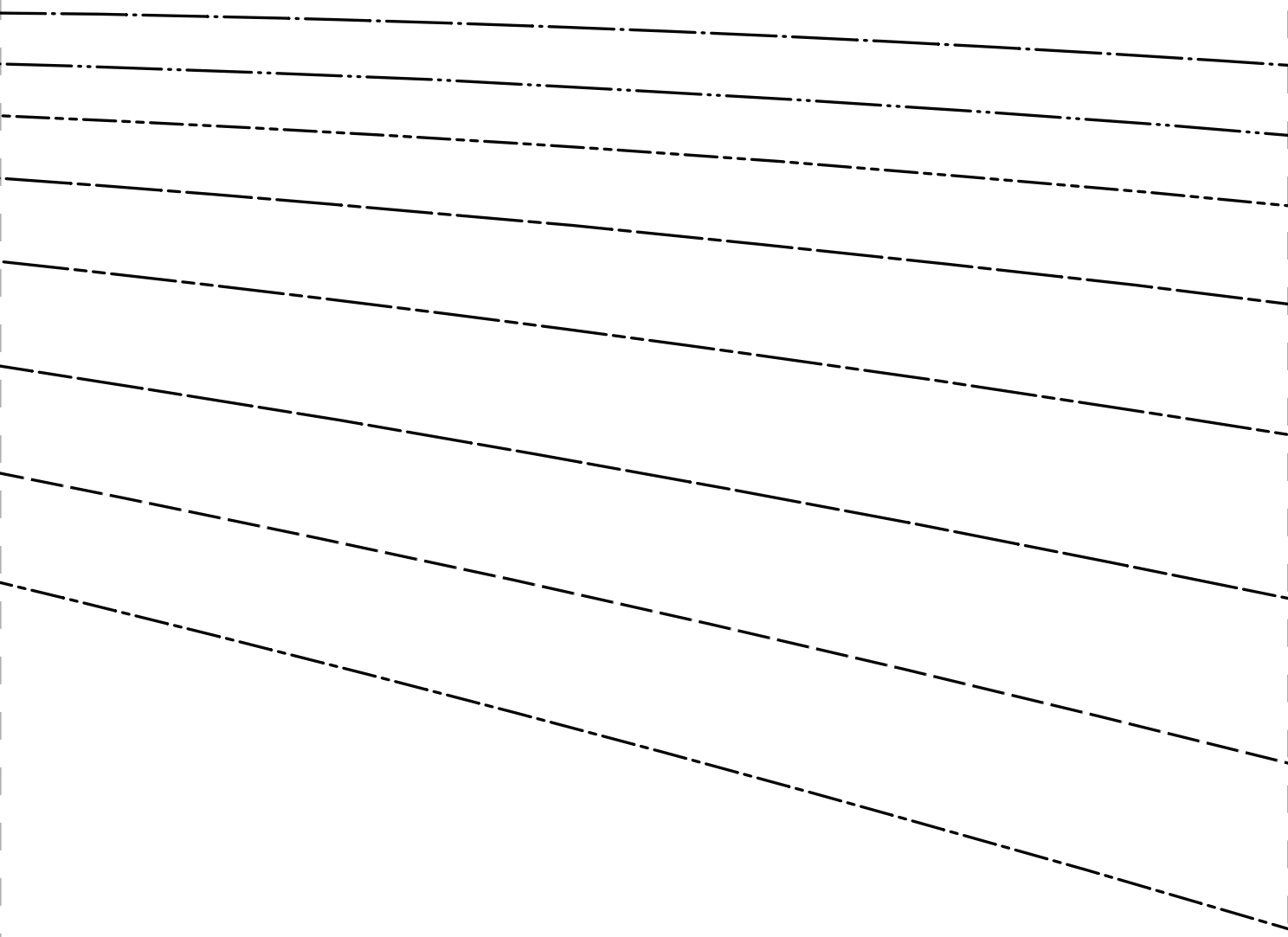
GRAINLINE



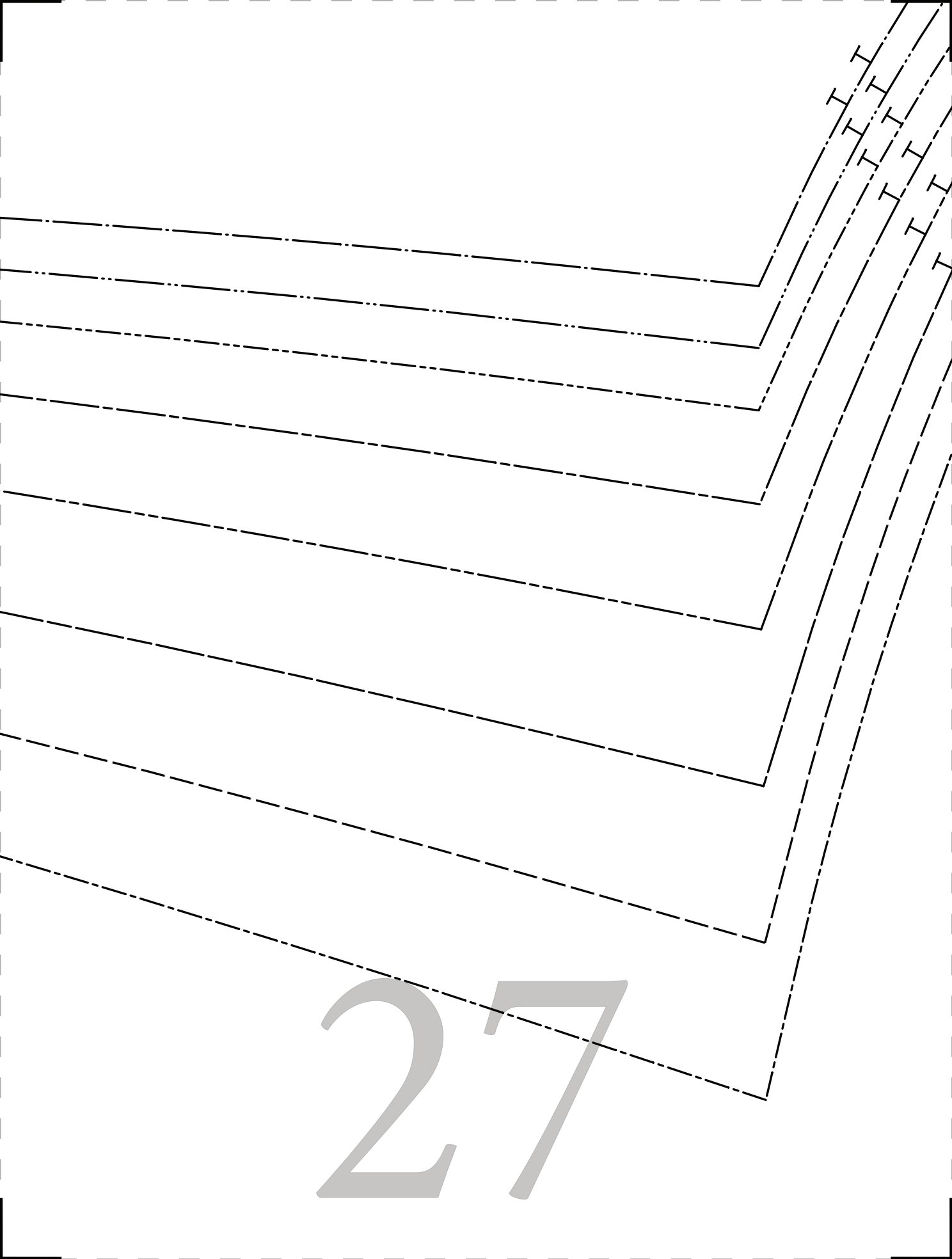
24



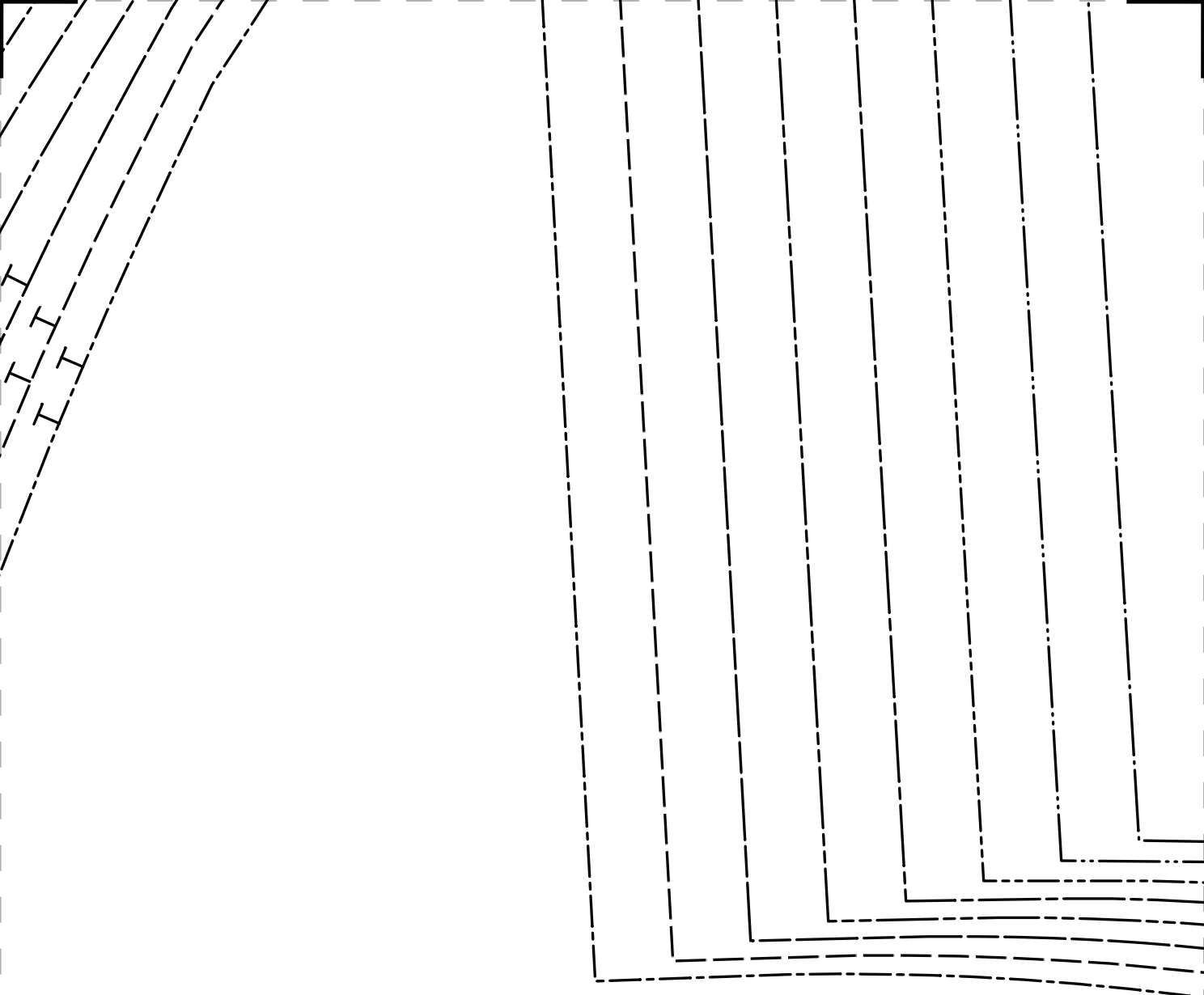
25



26



27



28

SIZE 0/2 .....

SIZE 4/6 .....

SIZE 8/10 .....

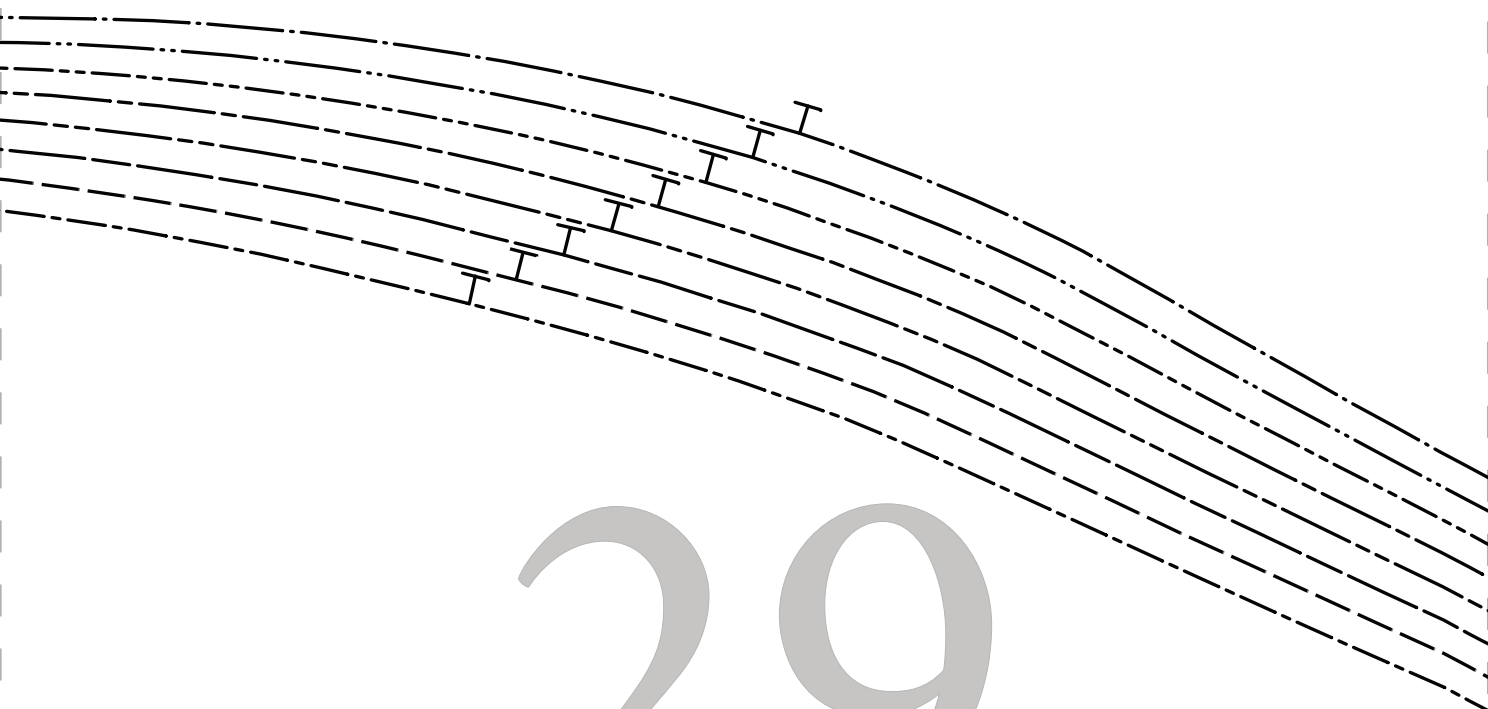
SIZE 12/14 .....

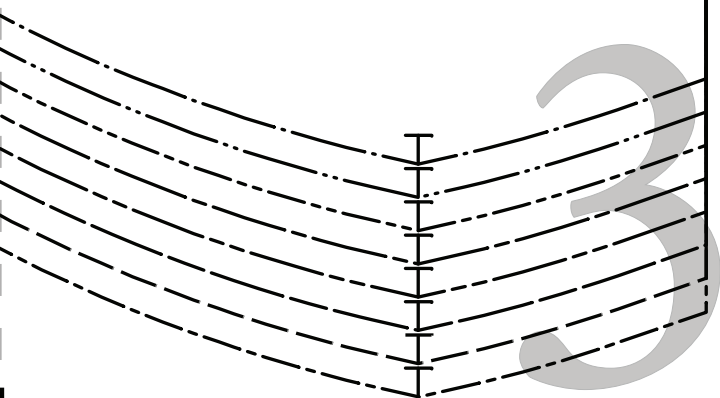
SIZE 16/18 .....

SIZE 20/22 .....

SIZE 24/26 .....

SIZE 28/30 .....





30

0