



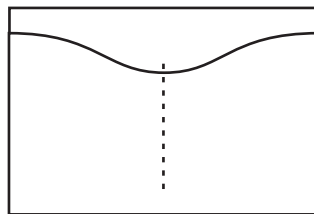
## ORDER OF OPERATIONS TRAVEL WALLET

### RECOMMENDED LEATHER WEIGHT

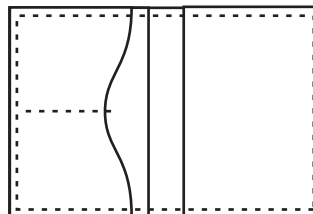
Exterior: 4-5oz

Pockets/Liner: 2-3oz

1. PRINT OUT THE PATTERN ON HEAVY CARD STOCK WITH PRINTER SET TO "ACTUAL SIZE"
2. CUT OUT THE PAPER PATTERN PIECES
3. TRACE THE PATTERN PIECES ONTO LEATHER
4. CUT OUT ALL OF THE LEATHER PIECES
5. BURNISH ALL POCKET TOPS BEFORE ASSEMBLY
- 6.(OPTIONAL) GLUE FRONT WALLET SHELL TO LINER, TRIM
7. GLUE POCKET B TO POCKET A, STITCH DOWN MIDDLE



8. GLUE POCKET ASSEMBLY AND POCKET A TO INTERIOR, STITCH ALONG OUTSIDE PERIMETER



9. TRIM, SAND, BURNISH, AND/OR FINISH EDGES AS DESIRED
10. ENJOY :)

# FRONT WALLET SHELL

---

## PRINT ACCURACY TEST

THE SOLID LINE SHOULD MEASURE  
2 INCHES LONG

**POCKET A  
SIDE 1+2**

**PRINT ACCURACY TEST**

THE SOLID LINE SHOULD MEASURE  
2 INCHES LONG

**POCKET B  
SIDE 2**